



**SINGLE PILE MOUNTING SYSTEM
FIELD APPLICATIONS**

M-FS-104L



*4 Panels in Height
Landscape Layout*

FEATURES

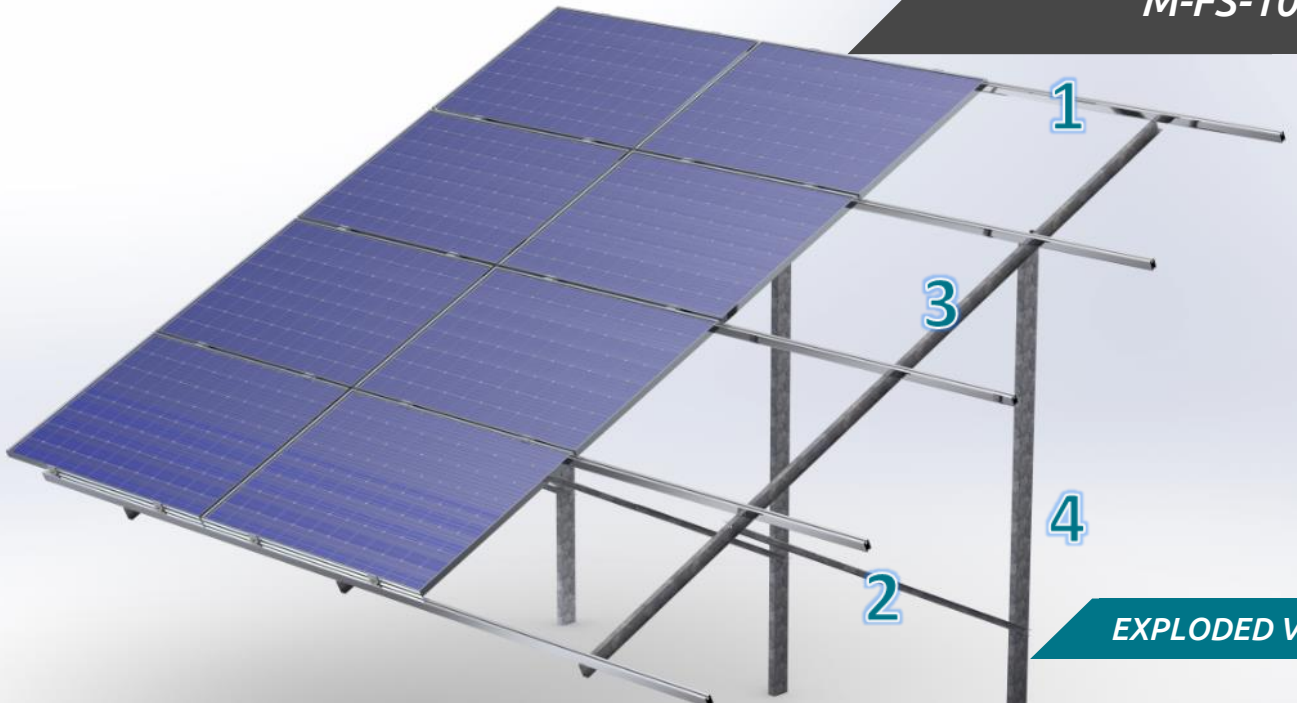
<i>Application</i>	For framed modules of any dimension and type - Adaptable to any ground & slope
<i>Materials</i>	Structure & piles from galvanized steel [EN 1461, EN 10346] & PV Rails from aluminum
<i>Accessories</i>	Aluminum, galvanized steel & stainless steel
<i>Inclination</i>	20°, 25°, 30° or according to the customer's request
<i>Orientation</i>	Landscape
<i>Dimension Limits</i>	Unlimited extension of table length / Usually up to 40m in length
<i>PV Modules</i>	Up to 2.5m in length/Special design for bifacial panels/Ability for further PV equipment on the main structure
<i>Foundation</i>	Pile ramming/Piles in holes filled with concrete/Piles in concrete blocks
<i>Wind Load Limit</i>	33 m/s (Terrain Category I)
<i>Snow Load Limit</i>	1.7 kN/m ² (Zone C)
<i>Slope Limits</i>	Up to ±15% E-W and up to ±5% S-N for normal design / up to ±35% E-W and up to ±25% S-N for special. The slopes are smooth and each structure is considered to have steady slopes.



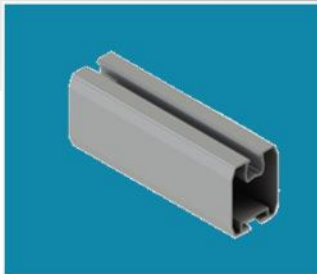
METALOUMIN
ALUMINIUM SYSTEMS SINCE 1969

SINGLE PILE MOUNTING SYSTEM FIELD APPLICATIONS

M-FS-104L



EXPLODED VIEW



1. PVRAIL



2. U BEAM



3. INCLINED BEAM



4. PILE

