

SINGLE PILE MOUNTING SYSTEM FOR FIELD APPLICATIONS

M-FS-112P

*2 Panels in Height Portrait Layout,
Adjustable Inclination*

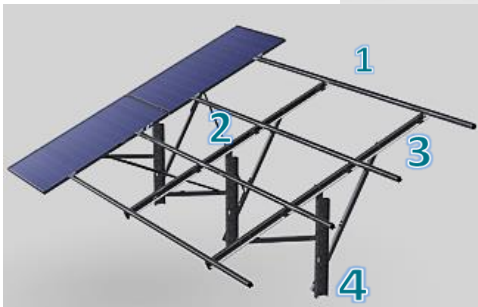
TECHNICAL FEATURES

Application	For panels of any dimension and type-Adaptable to any ground and slope.
Materials	Structure & piles from galvanized steel (EN1461, EN10346) & PV rails from aluminum.
Accessories	Aluminum, galvanized and stainless steel.
Inclination	Adaptable seasonal 15°- 25°- 35°.
Orientation	Portrait.
Dimensions (limit)	Unlimited extension of table length / Usually up to 40m in length.
PV Modules	Up to 1,75m in length/Special design for bifacial panels/Ability for further PV equipment on main structure.
Foundation	Dependent on ground resistance.
Foundation	Pile ramming/Piles in holes filled with concrete/Piles in concrete blocks.
Wind load (limit)	33 m/s (Terrain Category I).
Snow load (limit)	1,7 kN/m ² (Zone C).
Slopes (limit)	Normal design: ±15% E-W, -5% S-N. Special: ±35% E-W, 25% S-N. Slopes smooth, each structure w/steady slopes.

SINGLE PILE MOUNTING SYSTEM FOR FIELD APPLICATIONS

M-FS-112P

**Season 2
Inclination
25%**



SYSTEM IN THE POSITION OF 25° INCLINATION



SYSTEM IN THE POSITION OF 15° INCLINATION

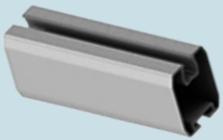
**Season 1
Inclination
15%**

**Season 3
Inclination
35%**

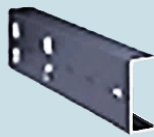


SYSTEM IN THE POSITION OF 35° INCLINATION

*Perspective View and
Components*



1: PV RAIL



2. HEAD TOP PILE



3. INCLINED BEAM



4. PILE

