

**MOUNTING SYSTEM FOR TRAPEZOIDAL  
POLYURETHANE SANDWICH ROOFS  
INDUSTRIAL APPLICATIONS**

**M-IR-800L-64**



*Landscape Layout*

**FEATURES**

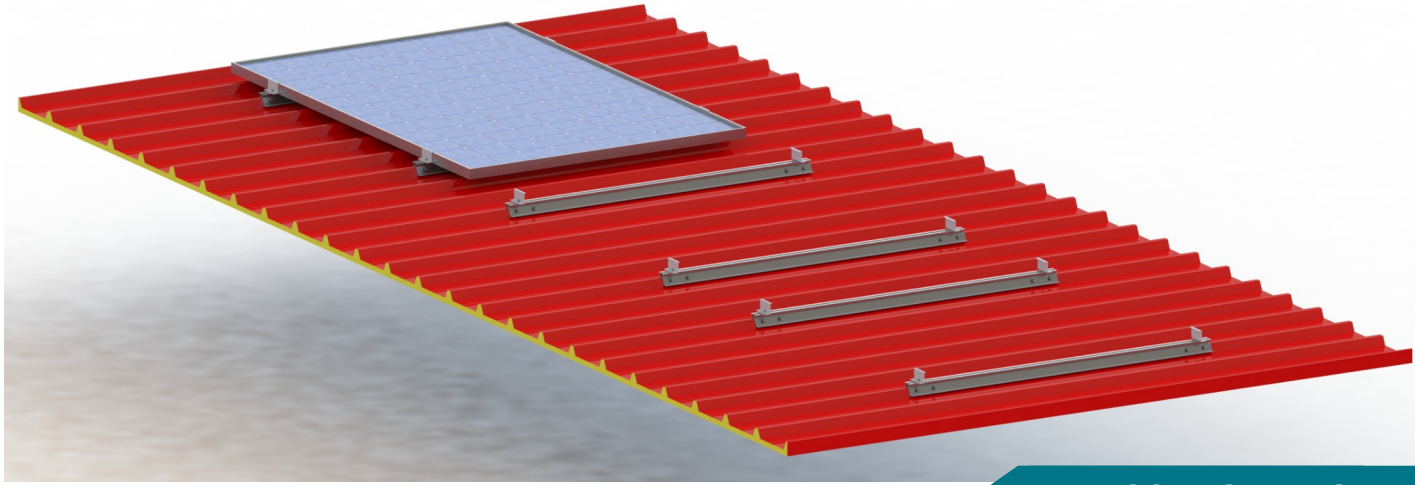
<i>Application</i>	<b>Industrial Roof Installations</b>
<i>Materials</i>	<b>Aluminum</b>
<i>Accessories</i>	<b>High Quality INOX or Galvanized ones</b>
<i>Orientation</i>	<b>Landscape</b>
<i>Inclination</i>	<b>Parallel to the roof</b>
<i>Anchoring</i>	<b>Self-drilling screws on the roof panel</b>
<i>Standard</i>	<b>Eurocodes &amp; National Annexes</b>
<i>Mb<sub>max</sub> for rail</i>	<b>0.9 kNm</b>
<i>Wind Load Limit</i>	<b>33 m/s (Terrain Category I)</b>
<i>Snow Load Limit</i>	<b>1.7 kN/m<sup>2</sup> (Zone C)</b>



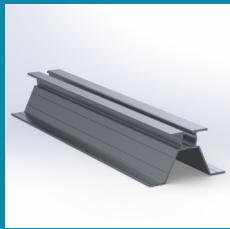
**METALOUMIN**  
ALUMINIUM SYSTEMS SINCE 1969

**MOUNTING SYSTEM FOR TRAPEZOIDAL  
POLYURETHANE SANDWICH ROOFS  
INDUSTRIAL APPLICATIONS**

**M-IR-800L-64**



**COMPONENTS**



**1. Pv Rail**



**2. End Clamp**



**3. Self-Drilling Screw**

