



**METALOUMIN**  
ALUMINIUM SYSTEMS SINCE 1969

**MOUNTING SYSTEM FOR CORRUGATED / FLAT  
METAL SHEET / SANDWICH PANEL ROOFS BOTH  
LAYOUTS INDUSTRIAL APPLICATIONS**

**M-IR-830PL**



*Horizontal or/and Portrait  
layout*

## FEATURES

<i>Application</i>	<b>Industrial Roofs</b>
<i>Materials</i>	<b>Aluminum</b>
<i>Accessories</i>	<b>High Quality INOX or Galvanized ones</b>
<i>Orientation</i>	<b>Portrait, Landscape</b>
<i>Anchoring</i>	<b>Thin bi-metal screws on the metal sheet</b>
<i>Standards</i>	<b>Eurocodes &amp; National Annexes</b>
<i>Mb<sub>max</sub> for rail</i>	<b>0.70 kNm</b>
<i>Wind Load Limit</i>	<b>33 m/s (Terrain Category I)</b>
<i>Snow Load Limit</i>	<b>1.7 kN/m<sup>2</sup> (Zone C)</b>

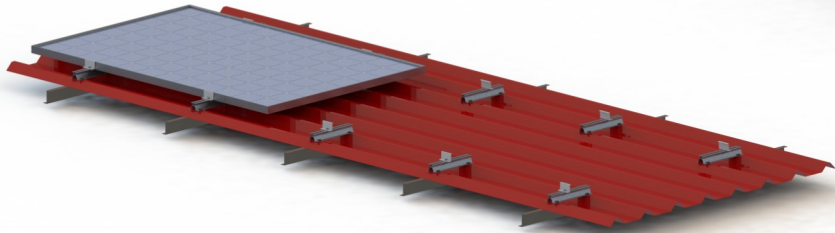


**METALOUMIN**  
ALUMINIUM SYSTEMS SINCE 1969

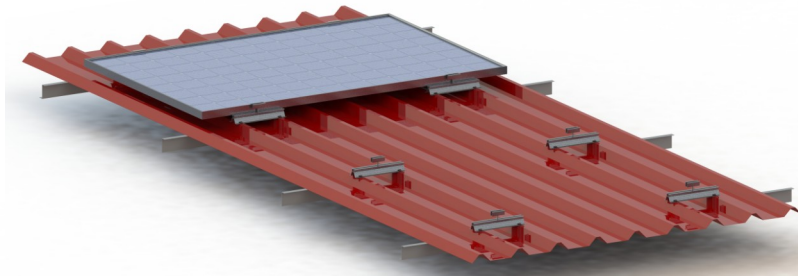
**MOUNTING SYSTEM FOR CORRUGATED /  
FLAT METAL SHEET / SANDWICH PANEL  
ROOFS BOTH LAYOUTS INDUSTRIAL**

**M-IR-830PL**

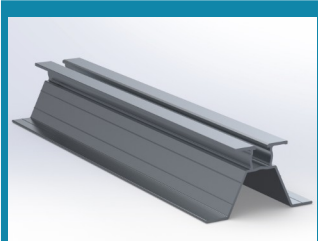
**Portrait**



**Landscape**



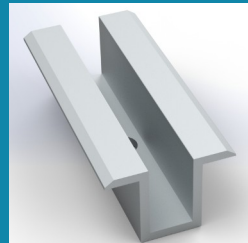
**COMPONENTS**



**1. SL64a Foot**



**2. End Clamp**



**3. Middle Clamp**



**4. Bi-Metal Screw**

