



METALOUMIN
ALUMINIUM SYSTEMS SINCE 1969

**MOUNTING SYSTEM FOR CORRUGATED / FLAT
METAL SHEET / SANDWICH PANEL ROOF TOPS
INDUSTRIAL APPLICATIONS**

M-IR-830P



Portrait layout

FEATURES

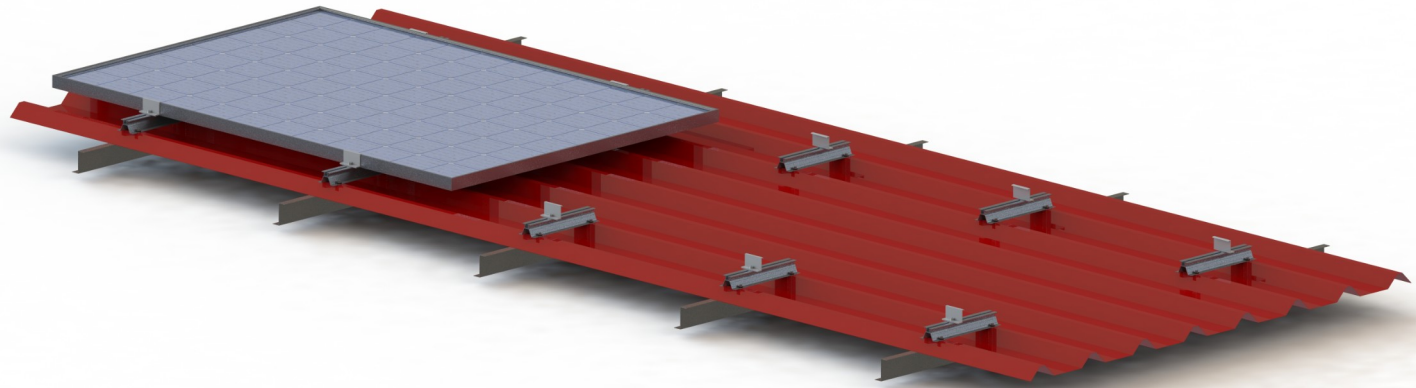
<i>Application</i>	Industrial Roofs
<i>Materials</i>	Aluminum
<i>Accessories</i>	High Quality INOX or Galvanized ones
<i>Orientation</i>	Portrait
<i>Anchoring</i>	Thin bi-metal screws on the metal sheet
<i>Standards</i>	Eurocodes & National Annexes
<i>Mb_{max} for rail</i>	0.70 kNm
<i>Wind Load Limit</i>	33 m/s (Terrain Category I)
<i>Snow Load Limit</i>	1.7 kN/m² (Zone C)



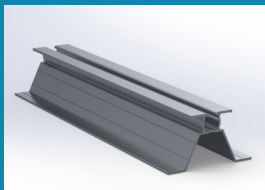
METALOUMIN
ALUMINIUM SYSTEMS SINCE 1969

**MOUNTING SYSTEM FOR CORRUGATED /
FLAT METAL SHEET / SANDWICH PANEL
ROOF TOPS INDUSTRIAL APPLICATIONS**

M-IR-830P



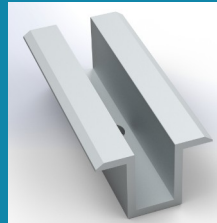
COMPONENTS



1. SL64a Foot



2. End Clamp



3. Middle Clamp



4. Bi-Metal Screw

