



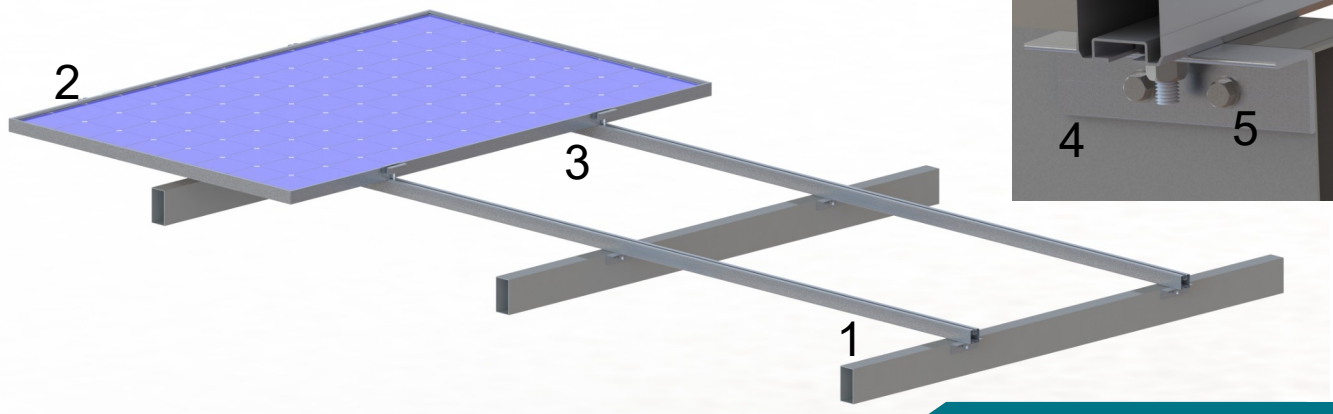
Portrait Layout

TECHNICAL FEATURES

<i>Application</i>	Pergola Installations
<i>Material</i>	Aluminum
<i>Accessories</i>	High Quality INOX or aluminum
<i>Orientation</i>	Portrait
<i>Foundation</i>	On the purlins of pergola
<i>Anchoring</i>	Galvanized self-drilling screws on purlins
<i>Standards</i>	Eurocodes & National Annexes
<i>Wind load limit</i>	33 m/s (Terrain Category I)
<i>Snow load limit</i>	1.7 kN/m ² (Zone C)

MOUNTING SYSTEMS FOR PERGOLA

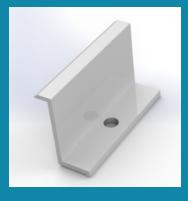
M-IR-840P



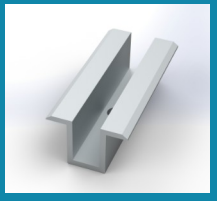
COMPONENTS



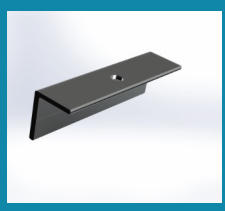
1. PV RAIL



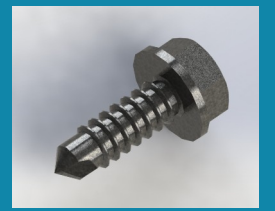
2. END CLAMP



3. MIDDLE CLAMP



4. Part SL350



5. GALVANIZED SELF-DRILLING SCREW

