



METALOUMIN
ALUMINIUM SYSTEMS SINCE 1969

**MOUNTING SYSTEM FOR CORRUGATED OR
FLAT METAL SHEET OR SANDWICH PANEL
ROOF TOPS INDUSTRIAL APPLICATIONS**

M-IR-860P

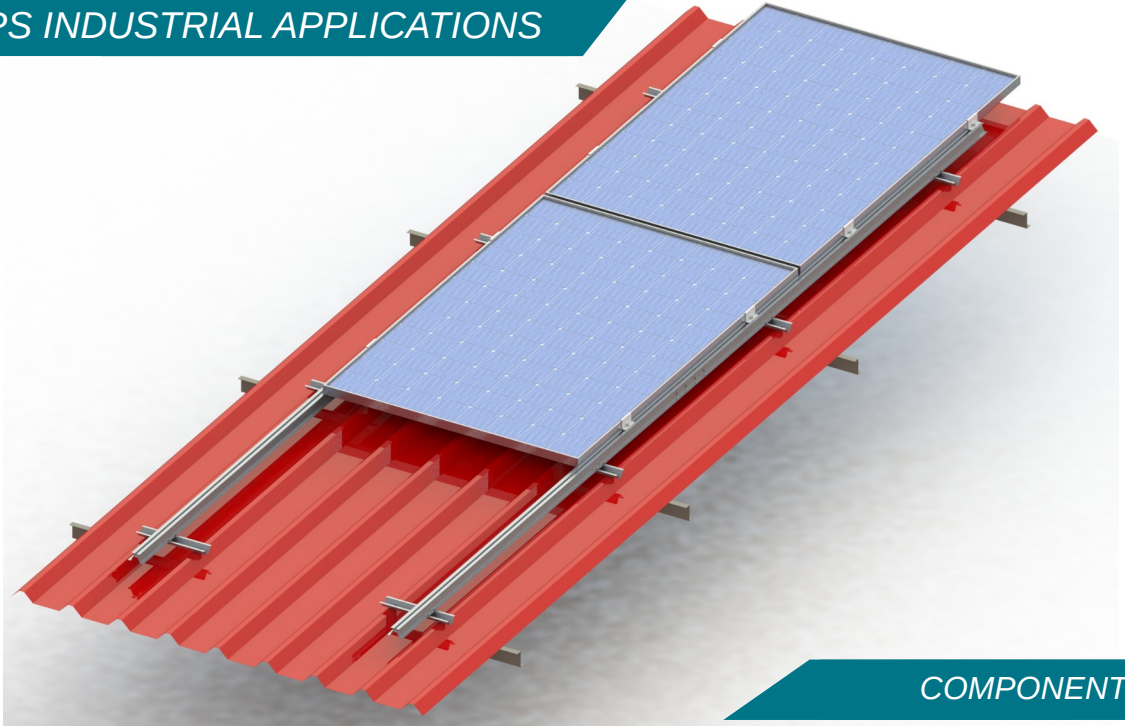


Portrait Layout

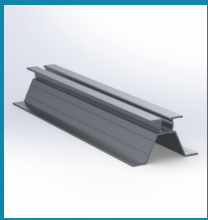
FEATURES

<i>Application</i>	Industrial Roof Installations
<i>Materials</i>	Aluminum
<i>Accessories</i>	High Quality INOX or Galvanized ones
<i>Orientation</i>	Portrait
<i>Foundation</i>	On the rails of the roof
<i>Anchoring</i>	Galvanized Self-Drilling screws on purlins
<i>Standards</i>	Eurocodes & National Annexes
<i>Mb_{max} for rail</i>	0.70 kNm
<i>Wind Load Limit</i>	33 m/s (Terrain Category I)
<i>Snow Load Limit</i>	1.7 kN/m² (Zone C)

**MOUNTING SYSTEM FOR CORRUGATED OR
FLAT METAL SHEET OR SANDWICH PANEL
ROOF TOPS INDUSTRIAL APPLICATIONS**



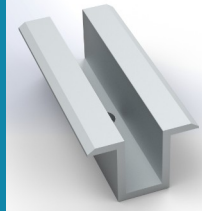
COMPONENTS



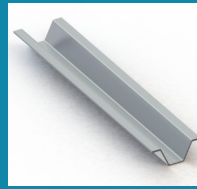
1. PV Rail



2. End Clamp



3. Middle Clamp



4. SL66 Part



5. Galvanized Self-Drilling Screw



6. Self-Drilling Screw

