



**METALOUMIN**  
ALUMINIUM SYSTEMS SINCE 1969

## MOUNTING SYSTEM FOR FLAT ROOF APPLICATIONS

M-FR-501P



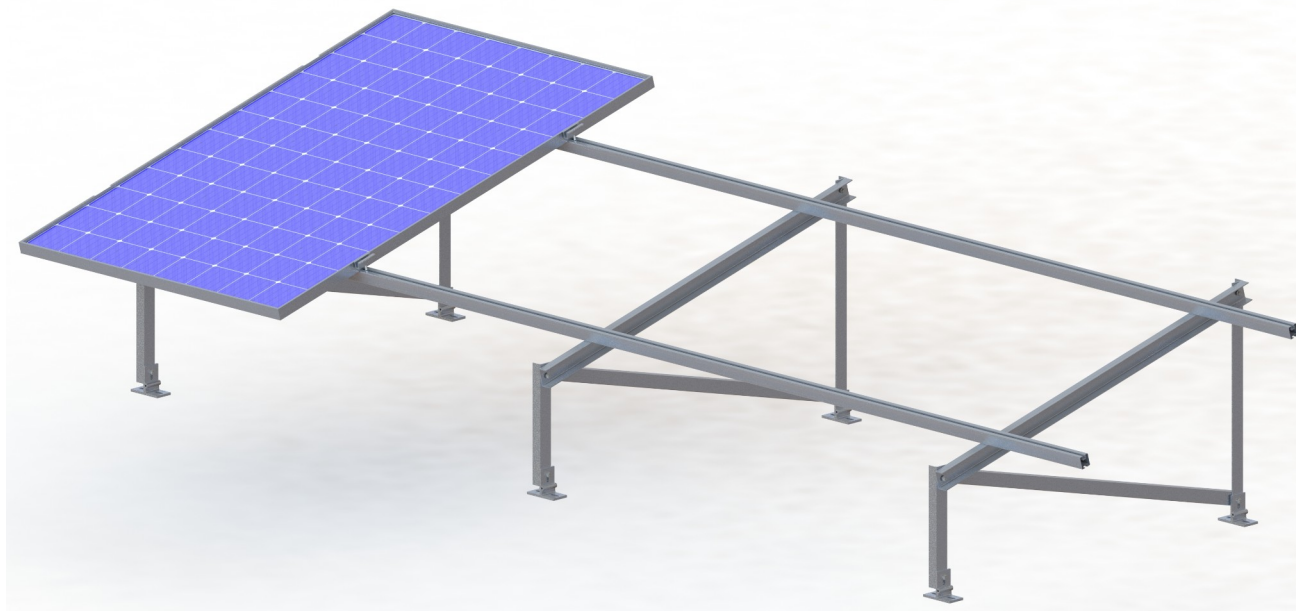
*1 panel in height  
Portrait Layout*

### FEATURES

<i>Application</i>	<b>Flat roof installations</b>
<i>Materials</i>	<b>Aluminum</b>
<i>Accessories</i>	<b>High Quality INOX or aluminum</b>
<i>Orientation</i>	<b>Portrait</b>
<i>Inclination</i>	<b>25° , 30° or according to the customer's request</b>
<i>Dimension's Limits</i>	<b>Unlimited extension of table length/ Usually up to 40m in length</b>
<i>PV Modules</i>	<b>Up to 2.5m in length/ Special Design for bifacial panels/Ability for further PV equipment on the main structure</b>
<i>Foundation</i>	<b>On the roof</b>
<i>Wind Load Limit</i>	<b>33 m/s (Terrain Category I)</b>
<i>Snow load Limit</i>	<b>1,7 kN/m<sup>2</sup> (Zone C)</b>

## MOUNTING SYSTEM FOR FLAT ROOF APPLICATIONS

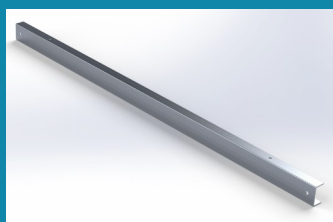
M-FR-501P



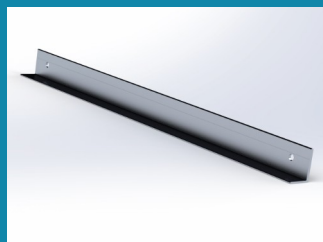
### COMPONENTS



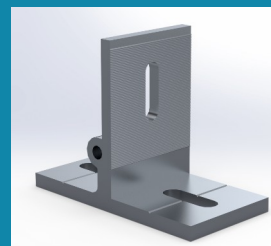
1.PV RAIL



2.INCLINED



3.LEG



4.FOOT

