



METALOUMIN
ALUMINIUM SYSTEMS SINCE 1969

**MOUNTING SYSTEM FOR FLAT
ROOF APPLICATIONS**

M-FR-501L



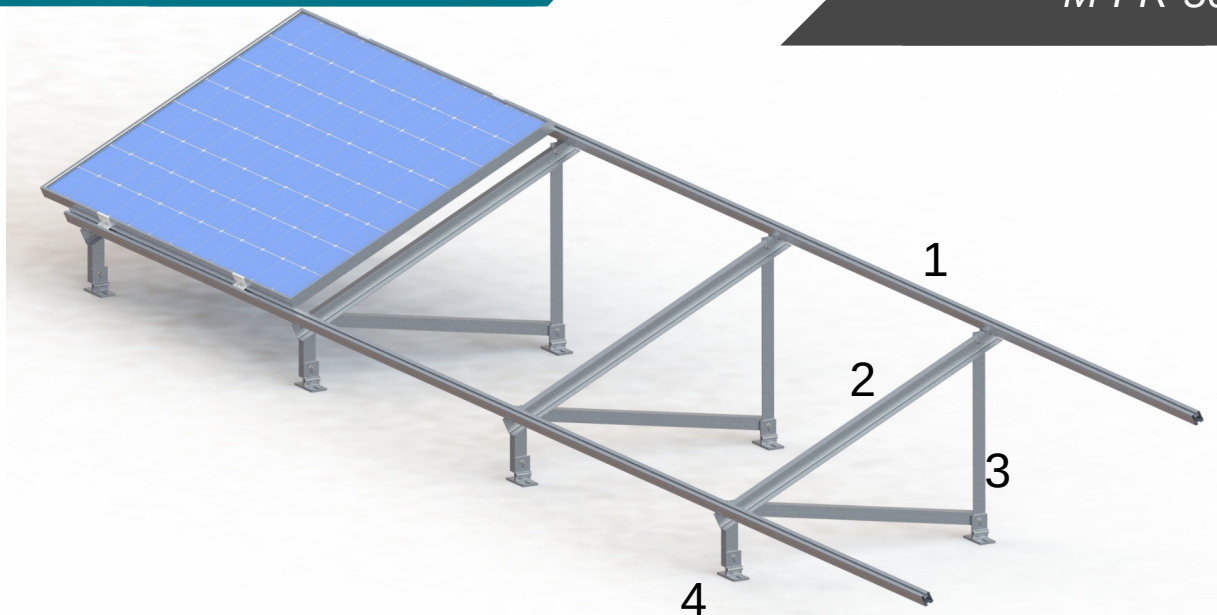
*1 panel in height
Landscape Layout*

FEATURES

<i>Application</i>	Flat roof installations
<i>Materials</i>	Aluminum
<i>Accessories</i>	High Quality INOX or aluminum
<i>Orientation</i>	Landscape
<i>Inclination</i>	25° , 30° or according to the customer's request
<i>Dimension's Limits</i>	Unlimited extension of table length/ Usually up to 40m in length
<i>PV Modules</i>	Up to 2.5m in length/ Special Design for bifacial panels/Ability for further PV equipment on the main structure
<i>Foundation</i>	On the roof
<i>Wind Load Limit</i>	33 m/s (Terrain Category I)
<i>Snow load Limit</i>	1,7 kN/m² (Zone C)

MOUNTING SYSTEM FOR FLAT ROOF APPLICATIONS

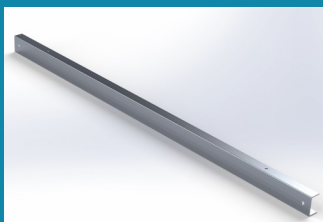
M-FR-501L



COMPONENTS



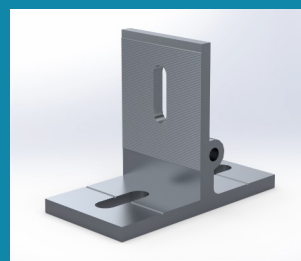
1.PV RAIL



2.INCLINED



3.LEG



4.FOOT

