

MOUNTING SYSTEM FOR TILED ROOF INSTALLATIONS

M-TR-400P



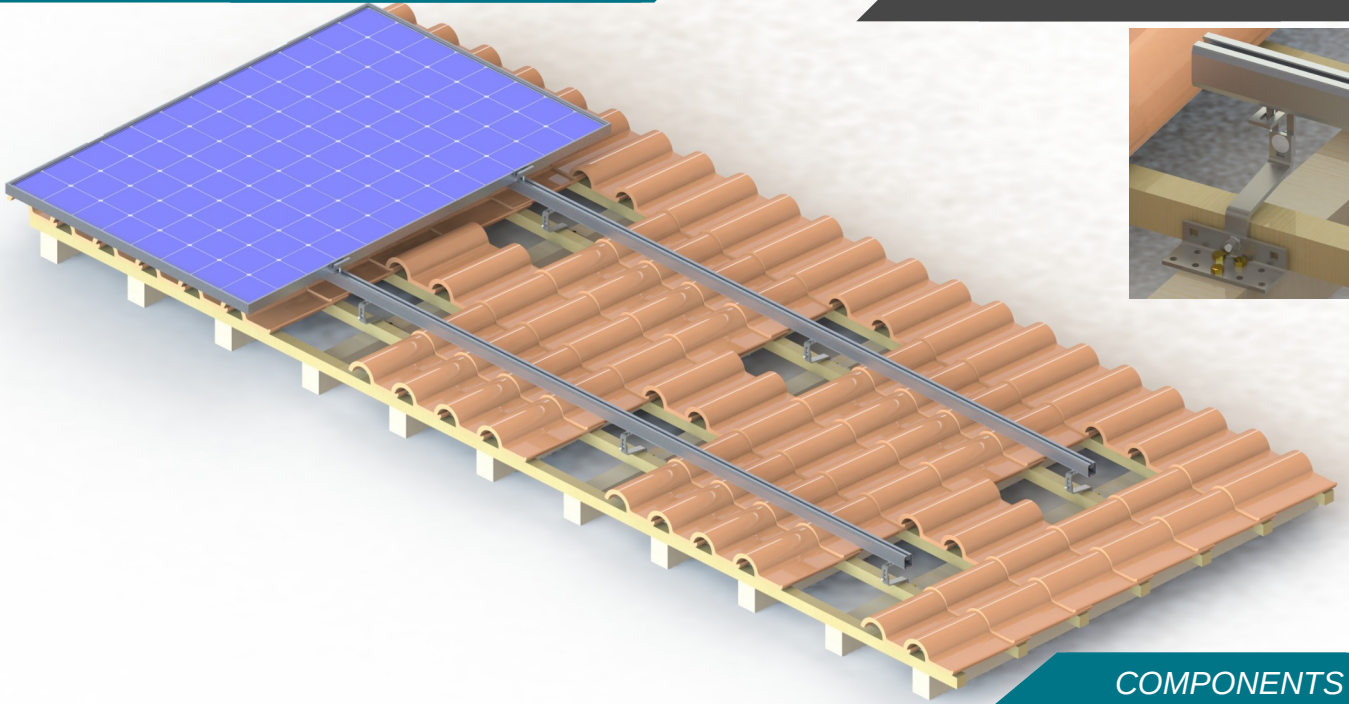
PANELS IN PORTRAIT
LAYOUT WITH HOOKS

TECHNICAL FEATURES

<i>Application</i>	Tiled roof installations
<i>Material</i>	Aluminum with high quality INOX accessories
<i>Mounting Type</i>	Hook (fixed or adjustable)
<i>Orientation</i>	Portrait
<i>Inclination</i>	Parallel to the roof
<i>Standard</i>	Eurocodes & National Annexes
<i>Wind load limit</i>	33 m/s (Terrain Category I)
<i>Snow load limit</i>	1.7 kN/m ² (Zone C)

MOUNTING SYSTEM FOR TILED ROOF INSTALLATIONS

M-TR-400P



COMPONENTS



PV RAIL



END CLAMP



MIDDLE CLAMP



HOOK

