

MOUNTING SYSTEM WITH THREADED ROD FLAT & TILED ROOF APPLICATIONS

M-TR-700P



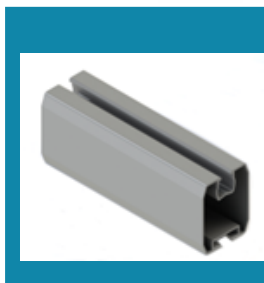
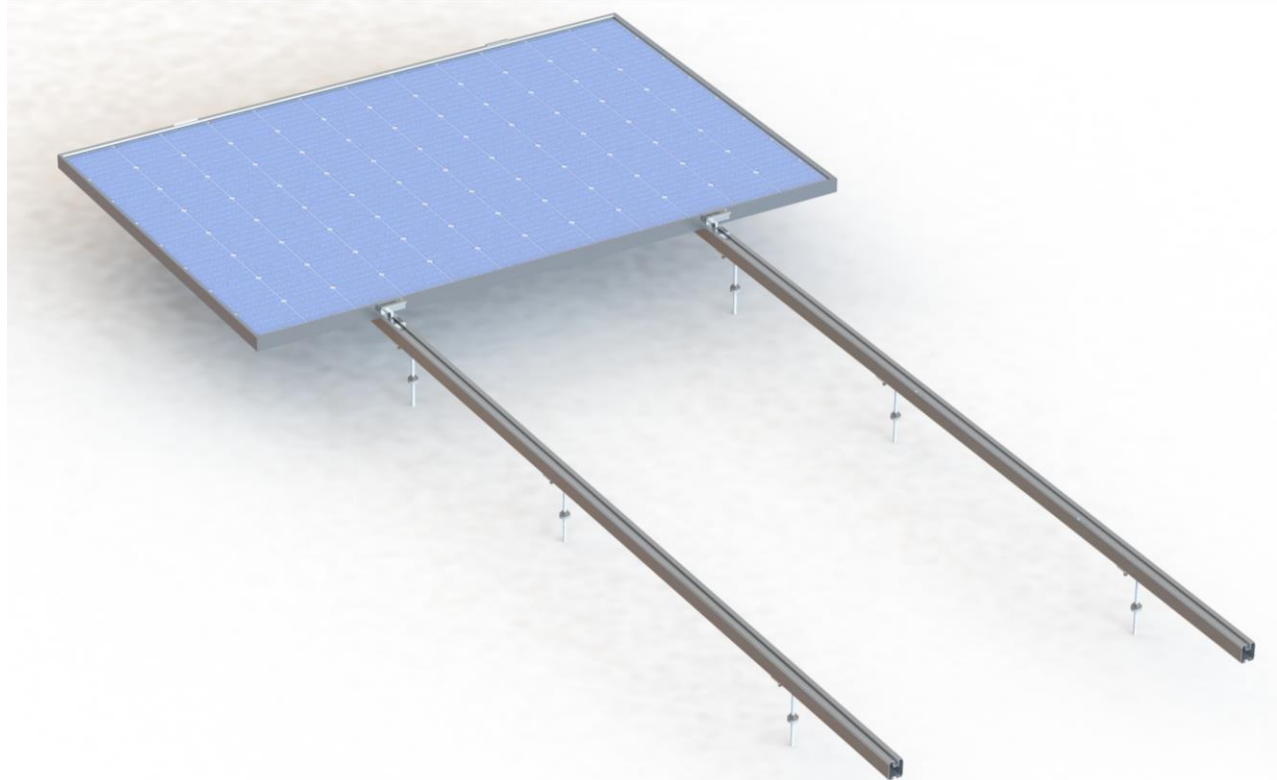
Portrait Layout

TECHNICAL FEATURES

| | |
|-------------------------------|---------------------------------|
| <i>Application</i> | Flat & Tiled roof installations |
| <i>Material</i> | Aluminum |
| <i>Accessories</i> | High Quality INOX or aluminum |
| <i>Mounting Type</i> | Threaded Rod M10 or M12 |
| <i>Orientation</i> | Portrait |
| <i>Inclination</i> | Parallel to the roof |
| <i>Standards</i> | Eurocodes & National Annexes |
| <i>Wind load limit</i> | 33 m/s (Terrain Category I) |
| <i>Snow load limit</i> | 1.7 kN/m ² (Zone C) |

**MOUNTING SYSTEM WITH THREADED ROD
FLAT & TILED ROOF APPLICATIONS**

M-TR-700P



PV RAIL



END CLAMP



MIDDLE CLAMP



THREADED ROD

