



**SINGLE PILE MOUNTING SYSTEM
FIELD APPLICATIONS**

M-FS-102P



**2 Panels in Height
Portrait Layout**

FEATURES

Application	For framed modules of any dimension and type - Adaptable to any ground & slope
Materials	Structure from galvanized steel & piles [EN 1461, EN 10346] & PV Rails from aluminum
Accessories	Aluminum, galvanized steel & stainless steel
Inclination	20°, 25°, 30° or according to the customer's request
Orientation	Portrait
Dimension Limits	Unlimited extension of table length / Usually up to 40m in length
PV Modules	Up to 2.5m in length/Special design for bifacial panels/Ability for further PV equipment on the main structure
Foundation	Pile ramming/Piles in holes filled with concrete/Piles in concrete blocks
Wind Load Limit	33 m/s (Terrain Category I)
Snow Load Limit	1.7 kN/m ² (Zone C)
Slope Limits	Up to ±15% E-W and up to ±5% S-N for normal design / up to ±35% E-W and up to ±25% S-N for special. The slopes are smooth and each structure is considered to have steady slopes.



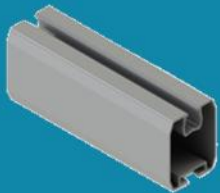
METALOUMIN
ALUMINIUM SYSTEMS SINCE 1969

SINGLE PILE MOUNTING SYSTEM FIELD APPLICATIONS

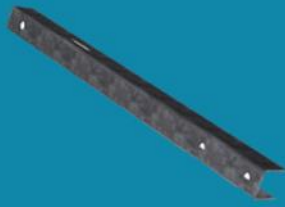
M-FS-102P



EXPLODED VIEW



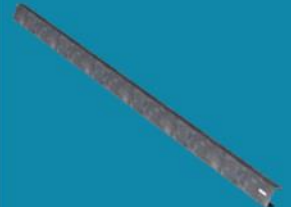
1. PVRAIL



2. U BEAM



3. INCLINED BEAM



4. PILE

