



**METALOUMIN**  
ALUMINIUM SYSTEMS SINCE 1969

## SINGLE PILE MOUNTING SYSTEM FIELD APPLICATIONS

**M-FS-102L**



**2 Panels in Height  
Landscape Layout**

### FEATURES

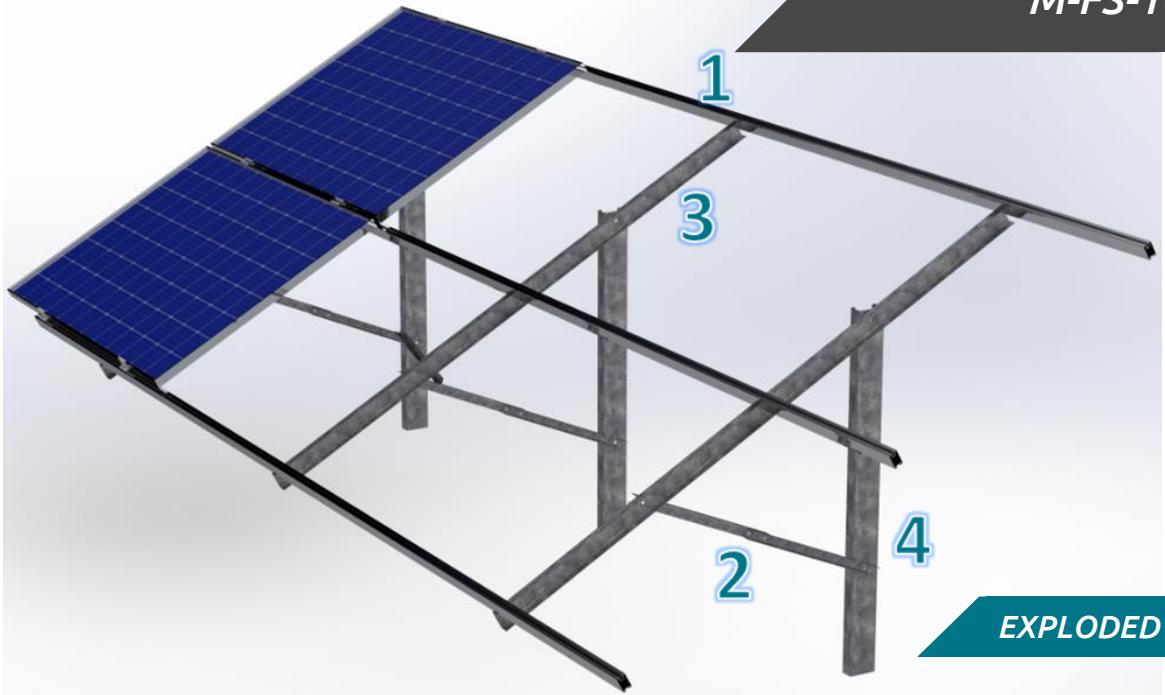
<b>Application</b>	For framed modules of any dimension and type - Adaptable to any ground & slope
<b>Materials</b>	Structure & piles from galvanized steel [EN 1461, EN 10346] & PV Rails from aluminum
<b>Accessories</b>	Aluminum, galvanized steel & stainless steel
<b>Inclination</b>	20°, 25°, 30° or according to the customer's request
<b>Orientation</b>	Landscape
<b>Dimension Limits</b>	Unlimited extension of table length / Usually up to 40m in length
<b>PV Modules</b>	Up to 2.5m in length/Special design for bifacial panels/Ability for further PV equipment on the main structure
<b>Foundation</b>	Pile ramming/Piles in holes filled with concrete/Piles in concrete blocks
<b>Wind Load Limit</b>	33 m/s (Terrain Category I)
<b>Snow Load Limit</b>	1.7 kN/m <sup>2</sup> (Zone C)
<b>Slope Limits</b>	Up to ±15% E-W and up to ±5% S-N for normal design / up to ±35% E-W and up to ±25% S-N for special. The slopes are smooth and each structure is considered to have steady slopes.



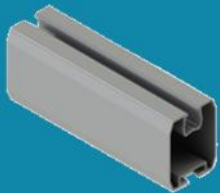
**METALOUMIN**  
ALUMINIUM SYSTEMS SINCE 1969

## SINGLE PILE MOUNTING SYSTEM FIELD APPLICATIONS

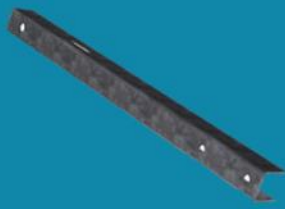
**M-FS-102L**



**EXPLODED VIEW**



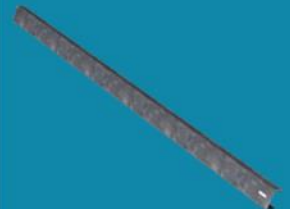
**1. PVRAIL**



**2. U BEAM**



**3. INCLINED BEAM**



**4. PILE**

