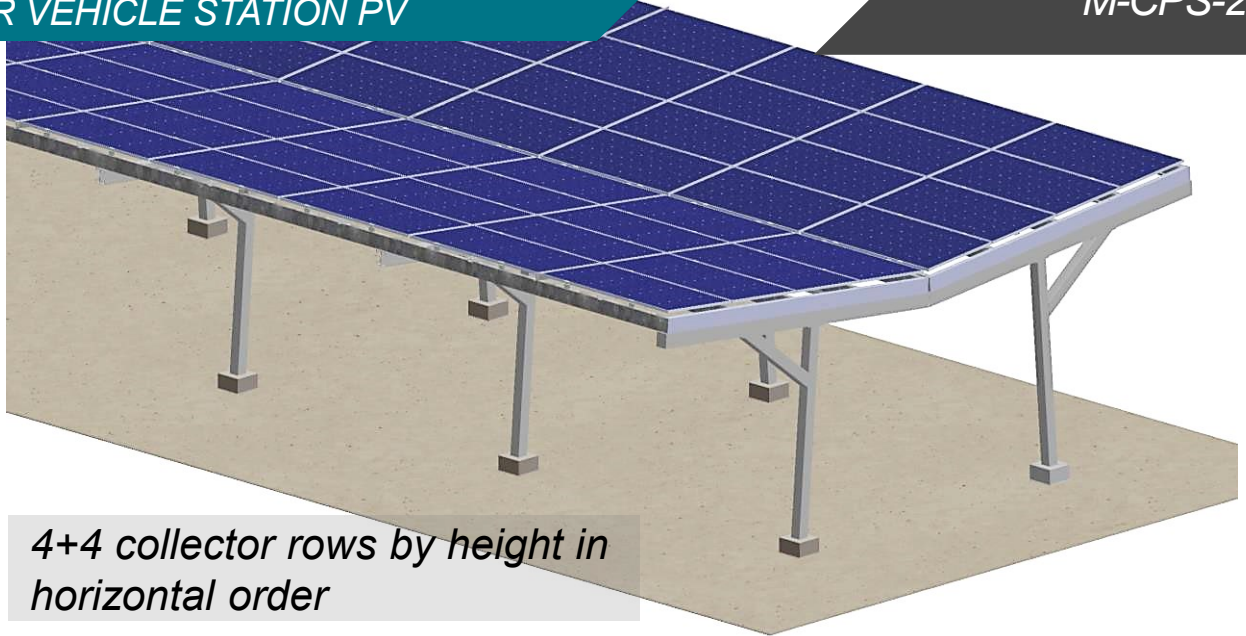


## INVERTED GABLE MOUNTING SYSTEM FOR VEHICLE STATION PV

M-CPS-224L



*4+4 collector rows by height in horizontal order*

### TECHNICAL FEATURES

*Application* Ground / Flat Concrete

*Materials* Superstructure, piles & rails of hot dip galvanized steel. Additional color options.

*Accessories* Stainless Steel

*Inclination* 5°

*Orientation* Horizontal

*PV Collectors* 2278 x 1134 x 30 mm

*Dimensions* Unlimited extension of construction length by use of expansion joints

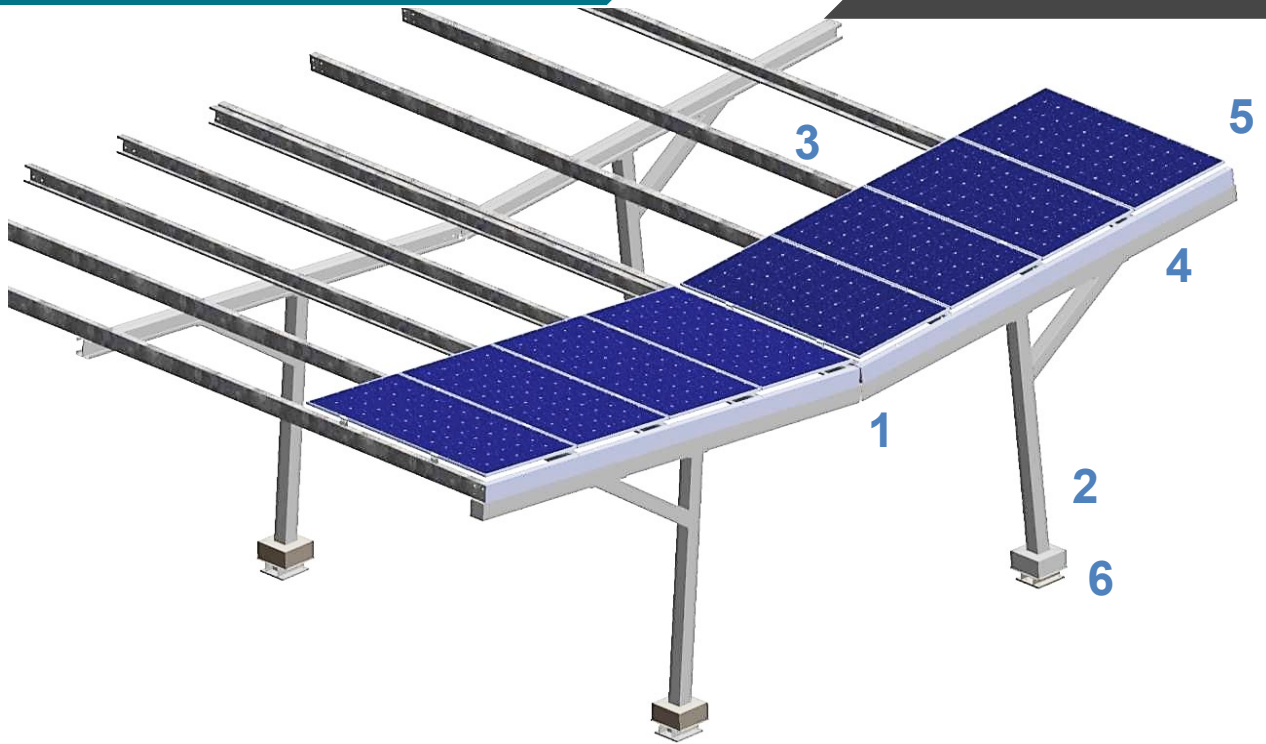
*Foundation* Threaded connection to concrete anchors

*Wind load limit* 33 m/s (Surface Category I)

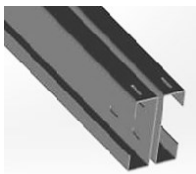
*Snow load limit*  $S_k=0,648 \text{ kN/m}^2$  (Zone B) – Altitude: 200m

**INVERTED GABLE MOUNTING SYSTEM  
FOR VEHICLE STATION PV**

**M-CPS-224L**



**MAIN CONSTRUCTION PARTS**



**1) Inclined Beam**



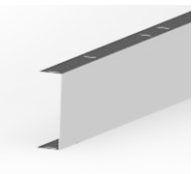
**2) Post**



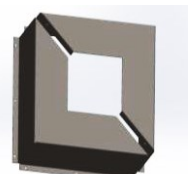
**3) Rail**



**4) Inclined Beam Cap**



**5) Rail Cap**



**6) Base Cap**