

## PREASSEMBLED MOUNTING SYSTEM FOR FLAT ROOFS

**M-FR-341L**



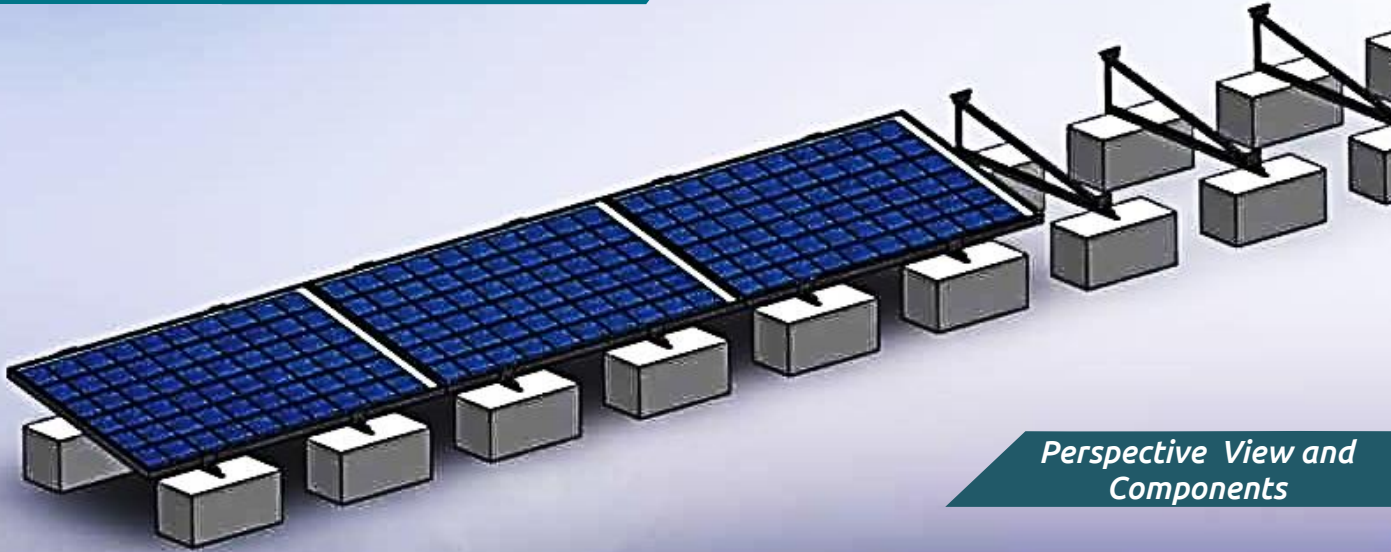
**1 Panel In Height  
No PV Rails**

### TECHNICAL FEATURES

<b>Application</b>	Flat roof installations
<b>Materials</b>	Aluminum
<b>Accessories</b>	High quality INOX or aluminum ones
<b>Inclination</b>	Adjustable (25°, 30°) or fixed according to the customer's request
<b>Orientation</b>	Landscape
<b>Dimensions' limits</b>	Unlimited extension of table length / Usually up to 40m in length
<b>PV Modules</b>	Up to 2.5m in length/Special design for bifacial panels/Ability for further PV equipment on the main structure
<b>Foundation</b>	Parallel to the roof
<b>Wind load limit</b>	33 m/s (Terrain Category III) 2m height for Terrain Category II, 5m for III & 10m for Terrain Category IV
<b>Snow load limit</b>	1.7 kN/m <sup>2</sup> (Zone C)

## PREASSEMBLED MOUNTING SYSTEM FOR FLAT ROOFS

**M-FR-341L**



**1. END CLAMP**



**2. TRIANGONAL BASE**

