

EAST - WEST MOUNTING SYSTEM FOR FLAT ROOFS WITH BALLASTS

M-FR-350

**1 Panel In Height
No PV Rails**

TECHNICAL FEATURES

Application Flat roof installations.

Materials Aluminum.

Accessories High quality INOX.

Orientation Portrait.

Dimensions' limits Unlimited extension of table length / Usually up to 40m in length.

PV Modules 2.5m height for Terrain Category II, 5m for III & 10m for Terrain Category IV.

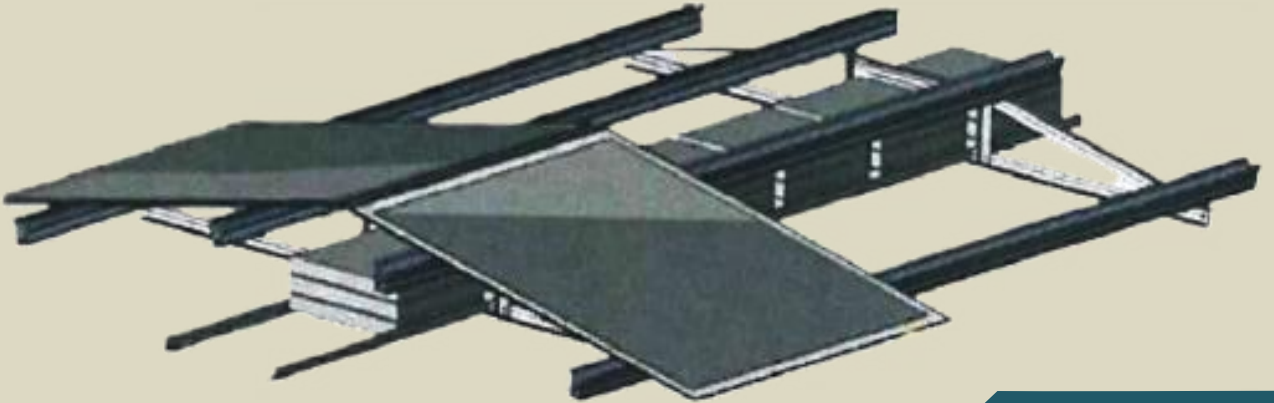
Foundation Ballasted.

Wind load limit 33 m/s (Terrain Category III) 2.5m height for Terrain Category II, 5m for III & 10m for Terrain Category IV.

Snow load limit 1.7 kN/m² (Zone C).

**EAST - WEST MOUNTING SYSTEM
FOR FLAT ROOFS WITH BALLASTS**

M-FR-350



*Perspective View and
Components*



1. END CLAMP



2. TRIANGONAL BASE

