

## SOUTH MOUNTING SYSTEM FOR FLAT ROOFS WITH BALLASTS

**M-FR-361P**

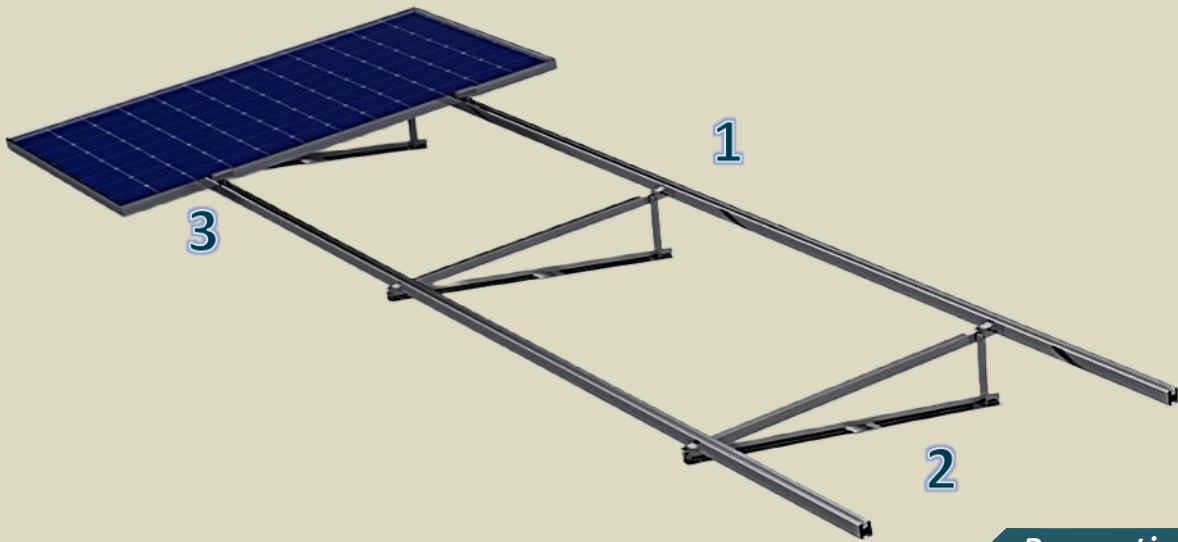


**1 Panel In Height  
No PV Rails**

TECHNICAL FEATURES	
<b>Application</b>	Flat roof installations.
<b>Materials</b>	Aluminum.
<b>Accessories</b>	High quality INOX.
<b>Inclination</b>	Adjustable (20°, 25°, 30°) or fixed according to the customer's request.
<b>Orientation</b>	Portrait.
<b>Dimensions' limits</b>	Unlimited extension of table length / Usually up to 40m in length.
<b>PV Modules</b>	Up to 2.5m in length/Special design for bifacial panels/Ability for further PV equipment on the main structure.
<b>Foundation</b>	Ballasted.
<b>Wind load limit</b>	33 m/s (Terrain Category III) 2.5m height for Terrain Category II, 5m for III & 10m for Terrain Category IV.
<b>Snow load limit</b>	1.7 kN/m <sup>2</sup> (Zone C).

## SOUTH MOUNTING SYSTEM FOR FLAT ROOFS WITH BALLASTS

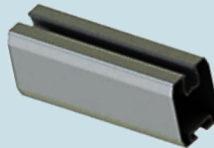
**M-FR-361P**



*Perspective View and  
Components*



**1. MIDDLE CLAMP**



**2. PV RAIL**



**3. TRIANGONAL BASE**

