

SOUTH MOUNTING SYSTEM FOR FLAT ROOFS WITH BALLASTS

M-FR-362L

*2 Panels In Height
Landscape*

TECHNICAL FEATURES

Application Flat roof installations.

Materials Aluminum.

Accessories High quality INOX.

Inclination Adjustable (20°, 25°, 30°) or fixed according to the customer's request.

Orientation Landscape.

Dimensions' limits Unlimited extension of table length / Usually up to 40m in length.

PV Modules Up to 2.5m in length/Special design for bifacial panels/Ability for further PV equipment on the main structure.

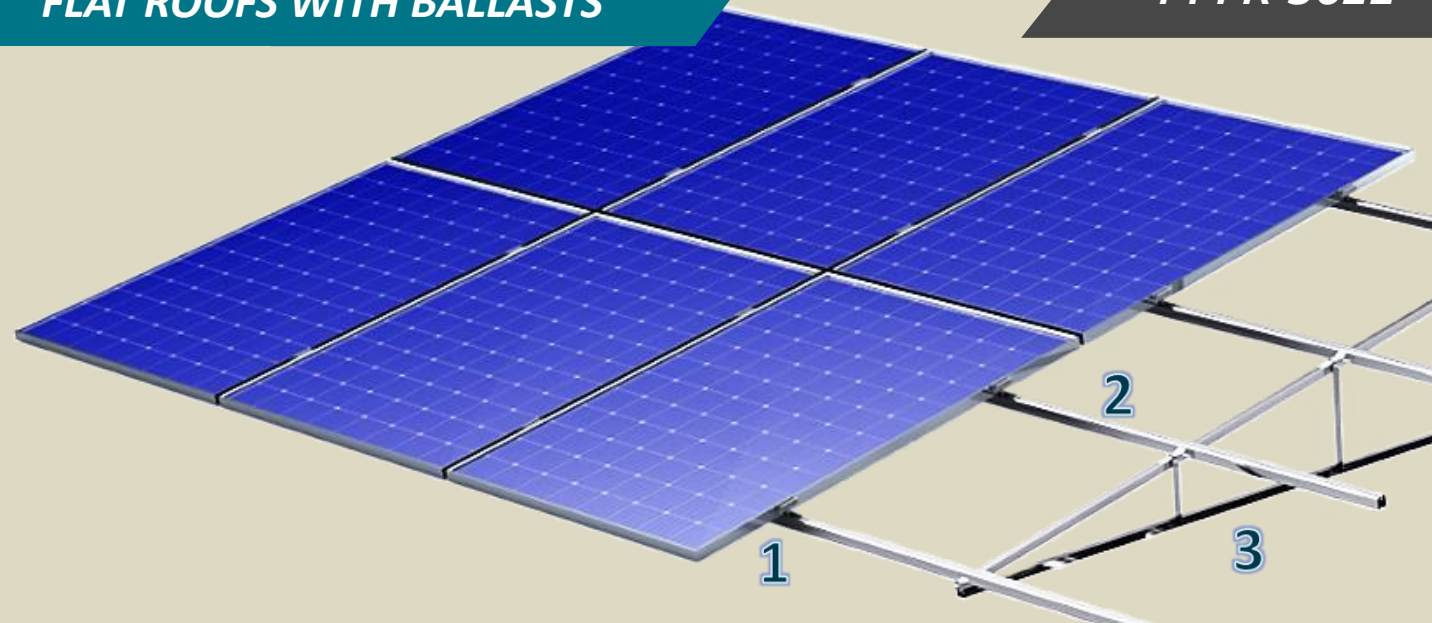
Foundation Ballasted.

Wind load limit 33 m/s (Terrain Category III) 2.5m height for Terrain Category II, 5m for III & 10m for Terrain Category IV.

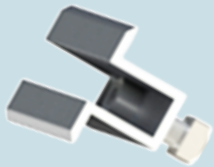
Snow load limit 1.7 kN/m² (Zone C).

**SOUTH MOUNTING SYSTEM FOR
FLAT ROOFS WITH BALLASTS**

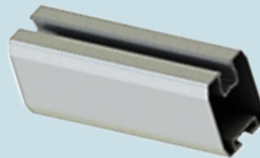
M-FR-362L



*Perspective View and
Components*



1. MIDDLE CLAMP



2. PV RAIL



3. TRIANGLE PORTRAIT

