

SOUTH MOUNTING SYSTEM FOR FLAT ROOFS WITH BALLASTS

M-FR-362P

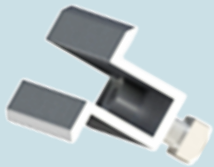
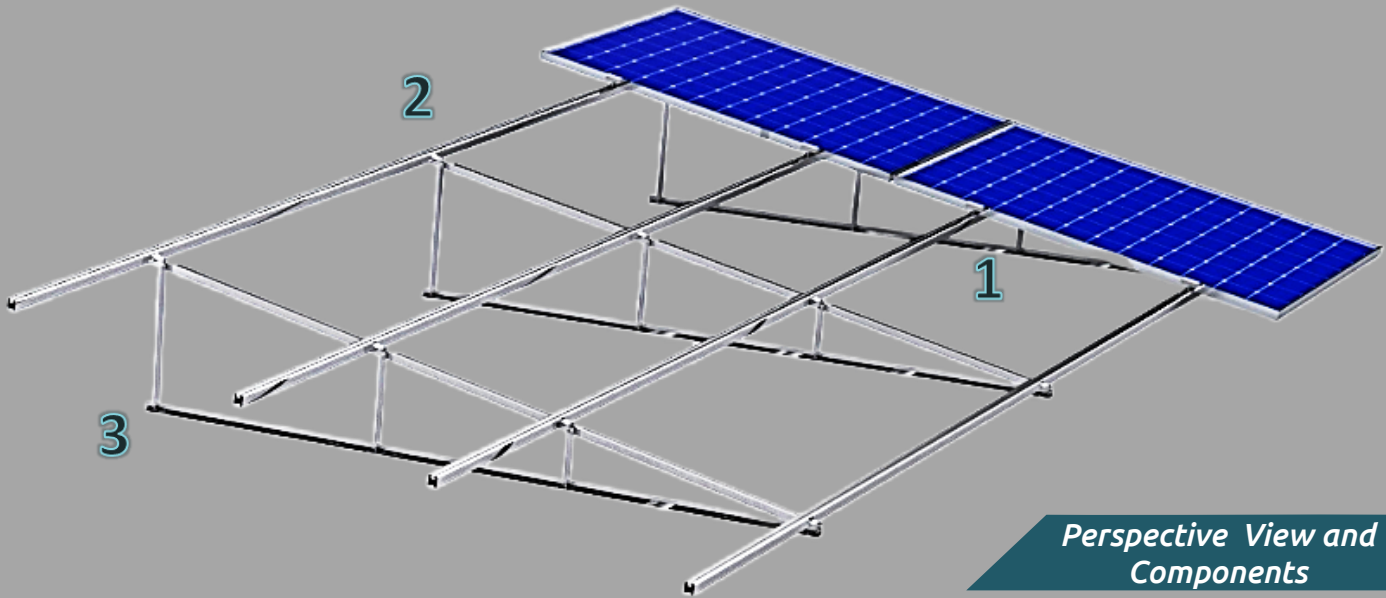
**2 Panels In Height
Portrait**

TECHNICAL FEATURES

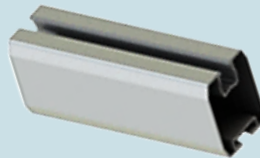
Application	Flat roof installations.
Materials	Aluminum.
Accessories	High quality INOX.
Inclination	Adjustable (20°, 25°, 30°) or fixed according to the customer's request.
Orientation	Portrait.
Dimensions' limits	Unlimited extension of table length / Usually up to 40m in length.
PV Modules	Up to 2.5m in length/Special design for bifacial panels/Ability for further PV equipment on the main structure.
Foundation	Ballasted.
Wind load limit	33 m/s (Terrain Category III) 2.5m height for Terrain Category II, 5m for III & 10m for Terrain Category IV.
Snow load limit	1.7 kN/m ² (Zone C).

SOUTH MOUNTING SYSTEM FOR FLAT ROOFS WITH BALLASTS

M-FR-362P



1. MIDDLE CLAMP



2. PV RAIL



3. TRIANGLE-PORTRAIT

