

## MOUNTING SYSTEM W/ BALLASTS FOR FLAT ROOFS

**M-FR-531L**

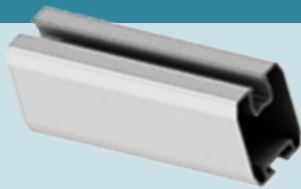
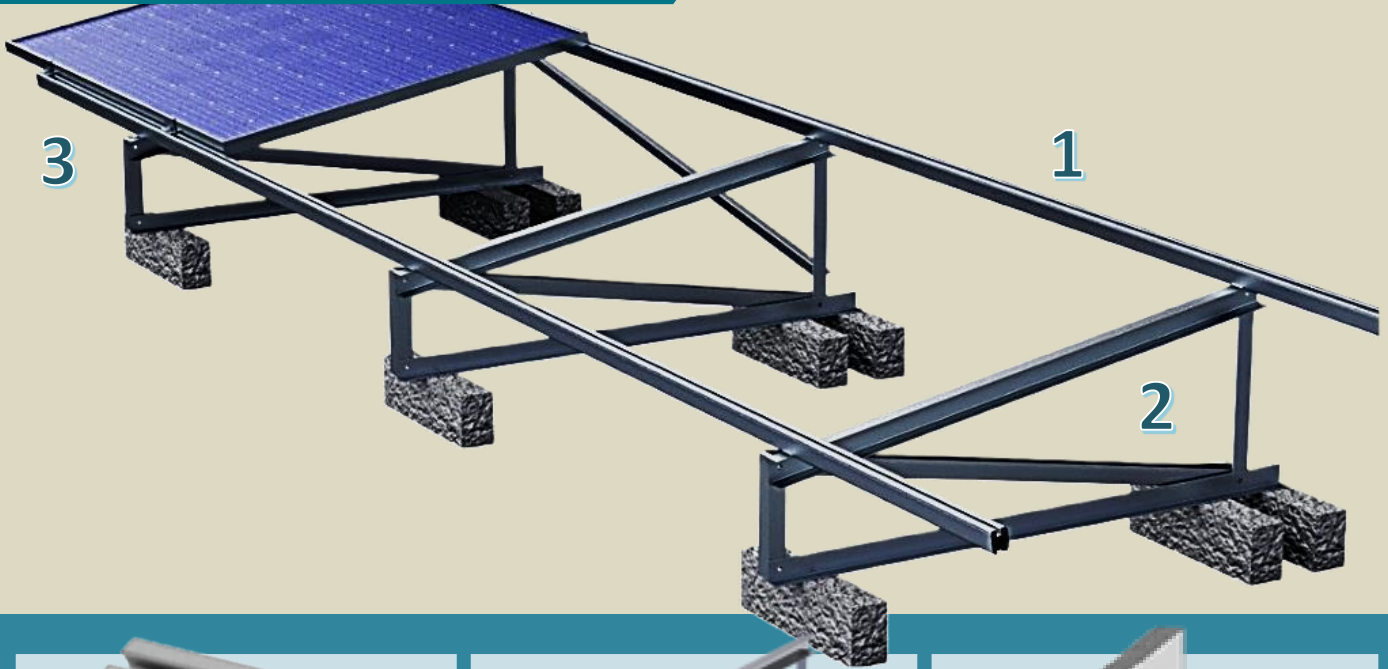
*1 Panel In Height  
Landscape Ballasted*

### TECHNICAL FEATURES

<b>Application</b>	Flat roof installations.
<b>Materials</b>	Aluminum.
<b>Accessories</b>	High quality INOX.
<b>Orientation</b>	Landscape.
<b>Inclination</b>	Adjustable 25°, 30° - upon request.
<b>PV Modules</b>	Up to 2.5m in length/Special accessories for bifacial panels/Ability for further PV
<b>Foundation</b>	Ballasted.
<b>Wind load limit</b>	33 m/s (Terrain Category III) 2.5m height for Terrain Category II, 5m for III & 10m for Terrain Category IV.
<b>Snow load limit</b>	1.7 kN/m <sup>2</sup> (Zone C).

## MOUNTING SYSTEM W/ BALLASTS FOR FLAT ROOFS

**M-FR-531L**



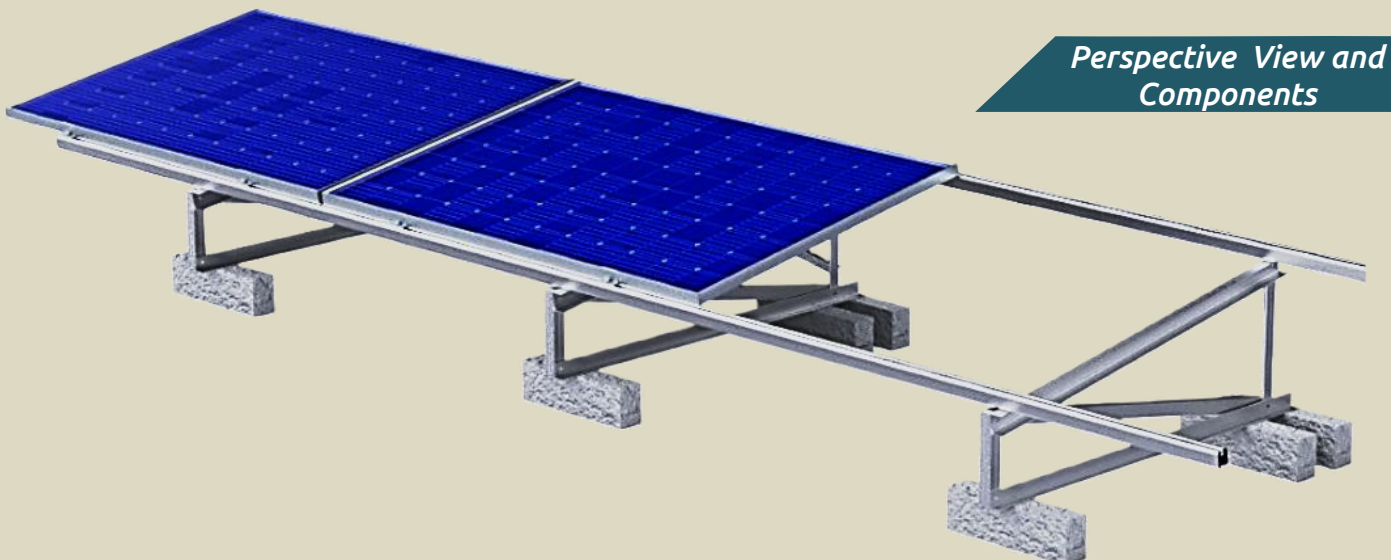
**1: PV RAIL**



**2: TRIANGLE**



**3. END CLAMP**



**Perspective View and  
Components**