

MOUNTING SYSTEM W/ BALLASTS FOR FLAT ROOFS

M-FR-533P

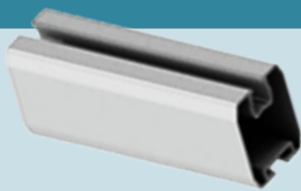
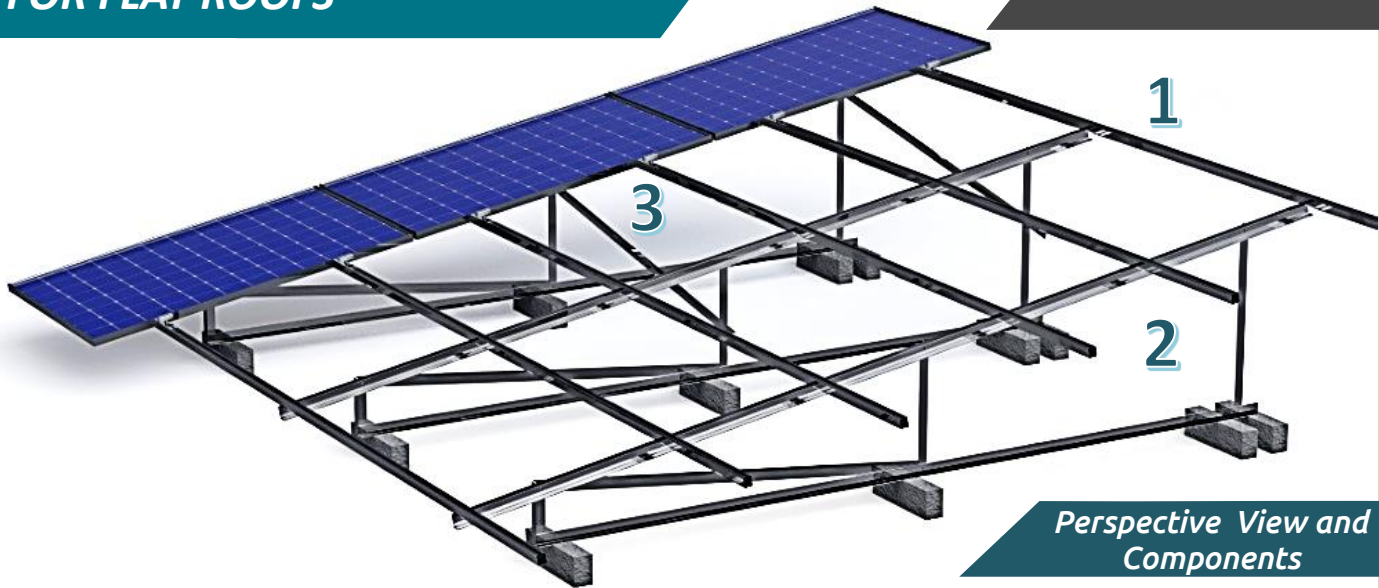
**3 Panels In Height
Portrait Ballasted**

TECHNICAL FEATURES

Application	Flat roof installations.
Materials	Aluminum.
Accessories	Aluminum or stainless steel.
Orientation	Portrait.
Inclination	Adjustable 25°, 30° - upon request.
PV Modules	Up to 2.5m in length/Special accessories for bifacial panels/Ability for further PV
Foundation	Ballasted.
Wind load limit	33 m/s (Terrain Category III).
Snow load limit	1.7 kN/m ² (Zone C).

MOUNTING SYSTEM W/ BALLASTS FOR FLAT ROOFS

M-FR-533P



1: PV RAIL



2: TRIANGLE



3. MIDDLE CLAMP

