



METALOUMIN
ALUMINIUM SYSTEMS SINCE 1969

MOUNTING SYSTEM FOR PITCHED ROOFS INDUSTRIAL APPLICATIONS

M-IR-381P



*Portrait Layout
With orientation-inclination
change*

FEATURES

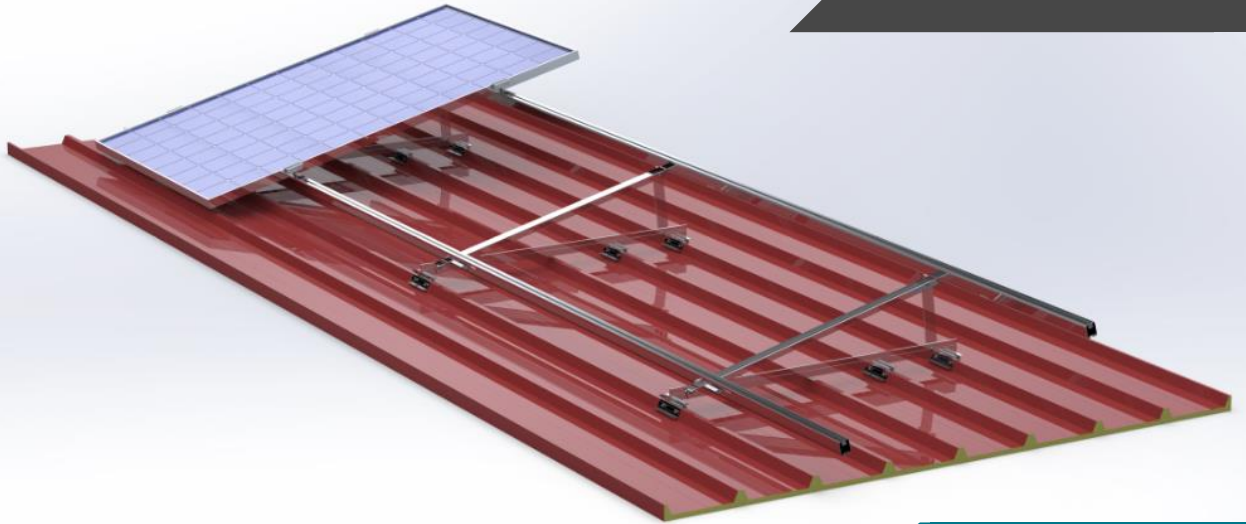
| | |
|----------------------------------|--|
| <i>Applications</i> | Industrial Roofs |
| <i>Materials</i> | Aluminum |
| <i>Εξαρτήματα</i> | High quality Inox or Galvanized ones |
| <i>Inclination</i> | 20°, 25°, 30° or according to the customer's request |
| <i>Orientation</i> | Portrait |
| <i>Anchoring</i> | Self-drilling screws on the roof panel |
| <i>Standard</i> | Eurocodes & National Annexes |
| <i>Mb_{max} for rail</i> | 0.70 kNm |
| <i>Wind load limit</i> | 33 m/s (Terrain Category III) |
| <i>Snow load limit</i> | 1.7 kN/m ² (Zone C) |



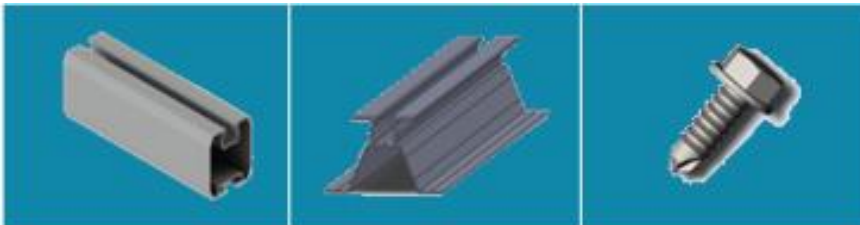
METALOUMIN
ALUMINIUM SYSTEMS SINCE 1969

MOUNTING SYSTEM FOR PITCHED ROOFS INDUSTRIAL APPLICATIONS

M-IR-381P



COMPONENTS



1. PV RAIL

2. PV RAIL CONNECTOR

3. SELF-DRILLING SCREW

Larnaca

