

## MOUNTING SYSTEM FOR INDUSTRIAL ROOFS

M-IR-800P-71

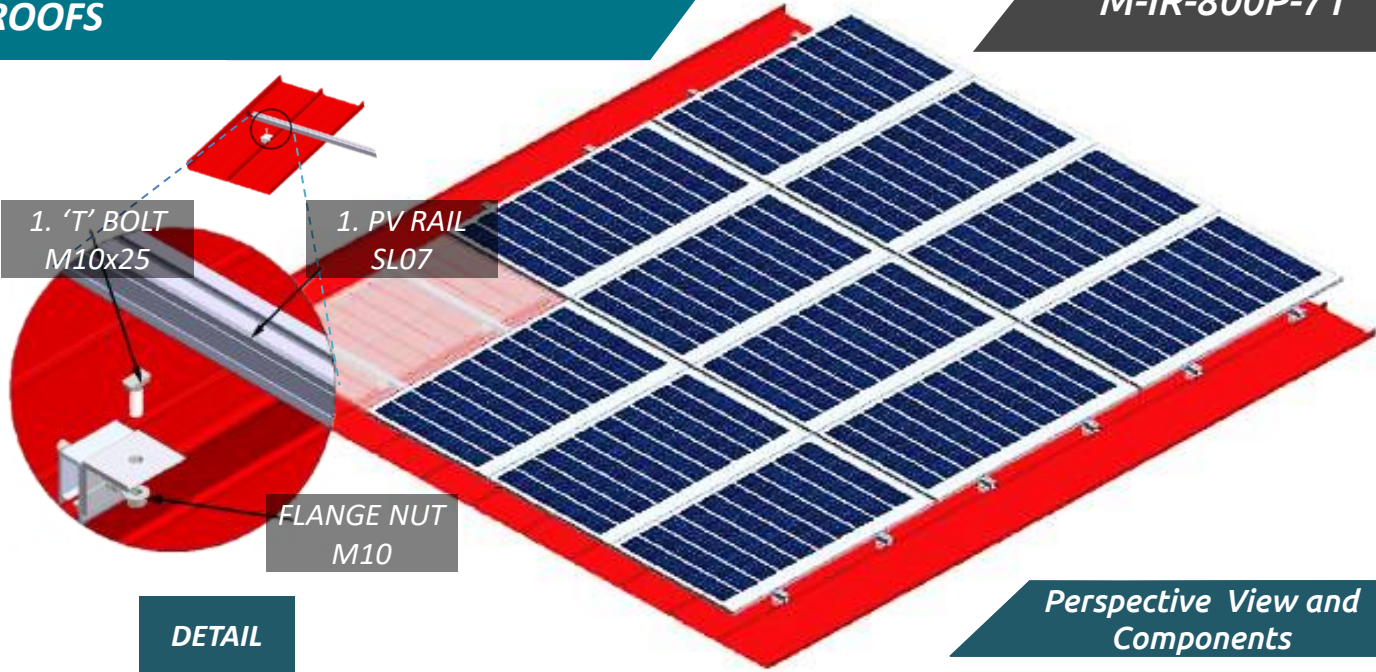


### TECHNICAL FEATURES

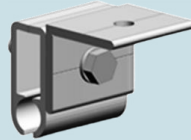
<b>Application</b>	Industrial roof installations.
<b>Materials</b>	Aluminum.
<b>Accessories</b>	High quality INOX or galvanized ones.
<b>Orientation</b>	Portrait.
<b>Inclination</b>	Parallel to the roof.
<b>Anchoring</b>	Aluminum clamp – Anchoring Span of 0.8m.
<b>Standard</b>	Eurocodes & National Annexes.
<b>Mbmax for rail</b>	0.70 kNm.
<b>Wind load limit</b>	33 m/s (Terrain Category III).
<b>Snow load limit</b>	1.7 kN/m <sup>2</sup> (Zone C).

## MOUNTING SYSTEM FOR INDUSTRIAL ROOFS

M-IR-800P-71



**1: PV RAIL**



**2: CALZIP SHEET JOINT**



**3 'T' TYPE BOLT**

