

## MOUNTING SYSTEM FOR INDUSTRIAL ROOFS

M-IR-810L

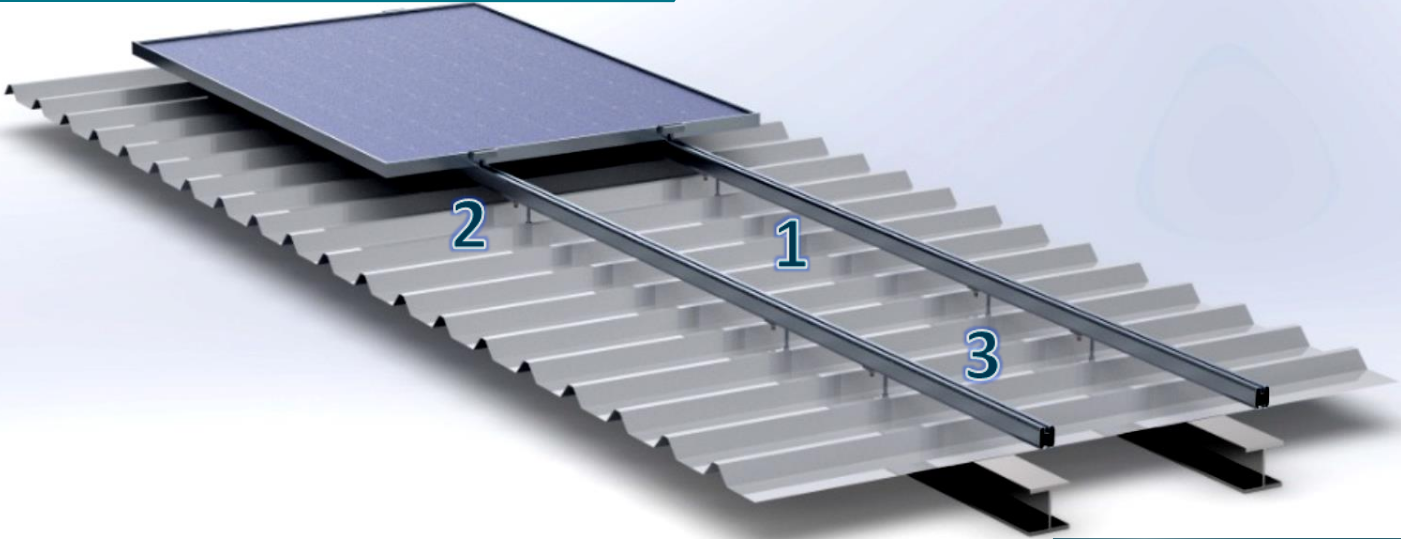
*Corrugated or Flat Metal Sheet Roofs landscape*

### TECHNICAL FEATURES

<b>Application</b>	Industrial roof installations.
<b>Materials</b>	Aluminum.
<b>Accessories</b>	High quality INOX or galvanized ones.
<b>Orientation</b>	Landscape.
<b>Inclination</b>	Parallel to the roof.
<b>Foundation</b>	On the roof's purlins.
<b>Anchoring</b>	Hanger bolts for metal BZ type, self – drilling screws for connection of PV rails to the PV
<b>PV Modules</b>	Up to 2.5m in length/Special design for bifacial panels/Ability for further PV equipment on
<b>Standard</b>	Eurocodes & National Annexes.
<b>Mbmax for rail</b>	0.70 kNm.
<b>Wind load limit</b>	33 m/s (Terrain Category III).
<b>Snow load limit</b>	1.7 kN/m <sup>2</sup> (Zone C).

## MOUNTING SYSTEM FOR INDUSTRIAL ROOFS

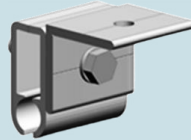
**M-IR-810L**



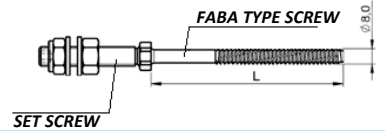
*Perspective View and Components*



**1: PV RAIL**



**2: CALZIP SHEET JOINT**



**3. HANGER BOLT**

