



METALOUMIN
ALUMINIUM SYSTEMS SINCE 1969

**MOUNTING SYSTEM FOR CORRUGATED / FLAT
METAL SHEET / SANDWICH PANEL ROOFS
BOTH LAYOUTS INDUSTRIAL APPLICATIONS**

M-IR-830PL



**Horizontal or/and
Portrait layout**

FEATURES

<i>Application</i>	Industrial Roofs
<i>Materials</i>	Aluminum
<i>Accessories</i>	High quality INOX or Galvanized ones
<i>Orientation</i>	Portrait, Landscape
<i>Anchoring</i>	Thin bi - metal sheet screws on the metal sheet
<i>Standards</i>	Eurocodes & National Annexes
<i>Mb_{max} for rail</i>	0.70 kNm
<i>Wind load limit</i>	33 m/s (Terrain Category III)
<i>Snow load limit</i>	1.7 kN/m² (Zone C)

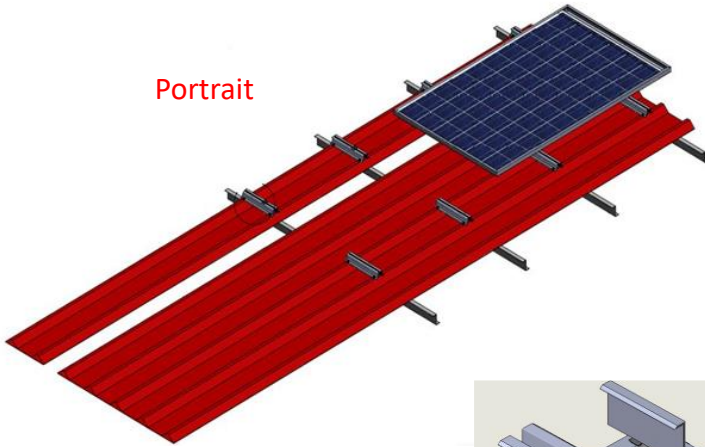


METALOUMIN
ALUMINIUM SYSTEMS SINCE 1969

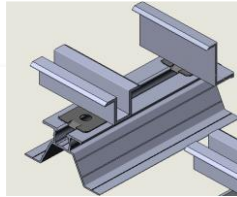
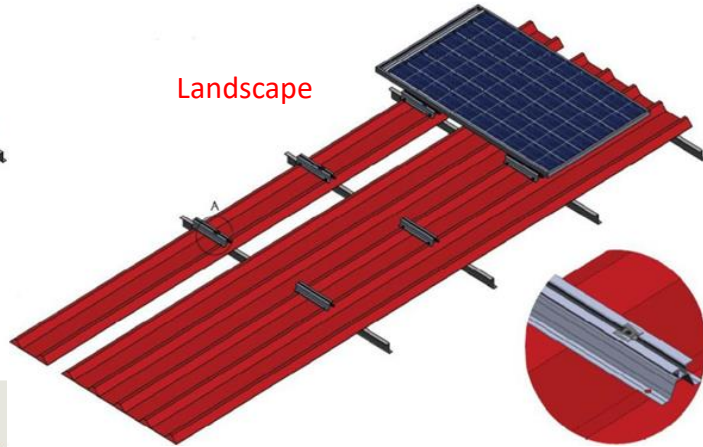
**MOUNTING SYSTEM FOR CORRUGATED / FLAT
METAL SHEET / SANDWICH PANEL ROOFS
BOTH LAYOUTS INDUSTRIAL APPLICATIONS**

M-IR-830PL

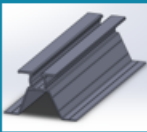
Portrait



Landscape



COMPONENTS



1. PV RAIL



2. MIDDLE CLAMP



3. END CLAMP



4 BI-METAL SCREW

CYPRUS

