



METALOUMIN
ALUMINIUM SYSTEMS SINCE 1969

**MOUNTING SYSTEM FOR CORRUGATED OR
FLAT METAL SHEET OR SANDWICH PANEL
ROOF TOPS INDUSTRIAL APPLICATIONS**

M-IR-880L



Landscape Layout

FEATURES

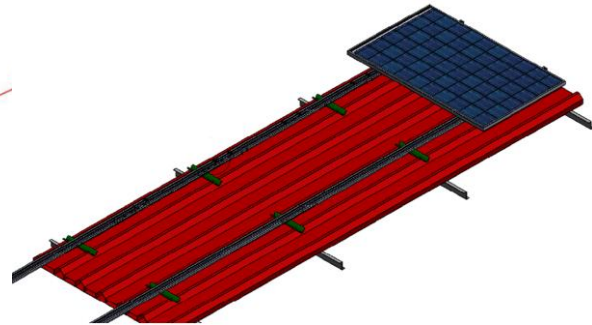
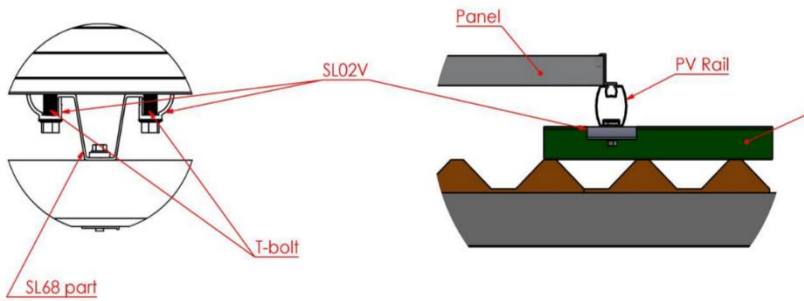
<i>Application</i>	Industrial roof installations
<i>Materials</i>	Aluminum
<i>Accessories</i>	High quality INOX or Galvanized ones
<i>Orientation</i>	Landscape
<i>Foundation</i>	Parallel to the roof
<i>Anchoring</i>	INOX T - bolts
<i>Standards</i>	Eurocodes & National Annexes
<i>Mb_{max} for rail</i>	0.70 kNm
<i>Wind load limit</i>	33 m/s (Terrain Category III)
<i>Snow load limit</i>	1.7 kN/m ² (Zone C)



METALOUMIN
ALUMINIUM SYSTEMS SINCE 1969

**MOUNTING SYSTEM FOR CORRUGATED OR
FLAT METAL SHEET OR SANDWICH PANEL
ROOF TOPS INDUSTRIAL APPLICATIONS**

M-IR-880L



COMPONENTS

