

MOUNTING SYSTEM FOR INDUSTRIAL ROOFS

M-IR-880L

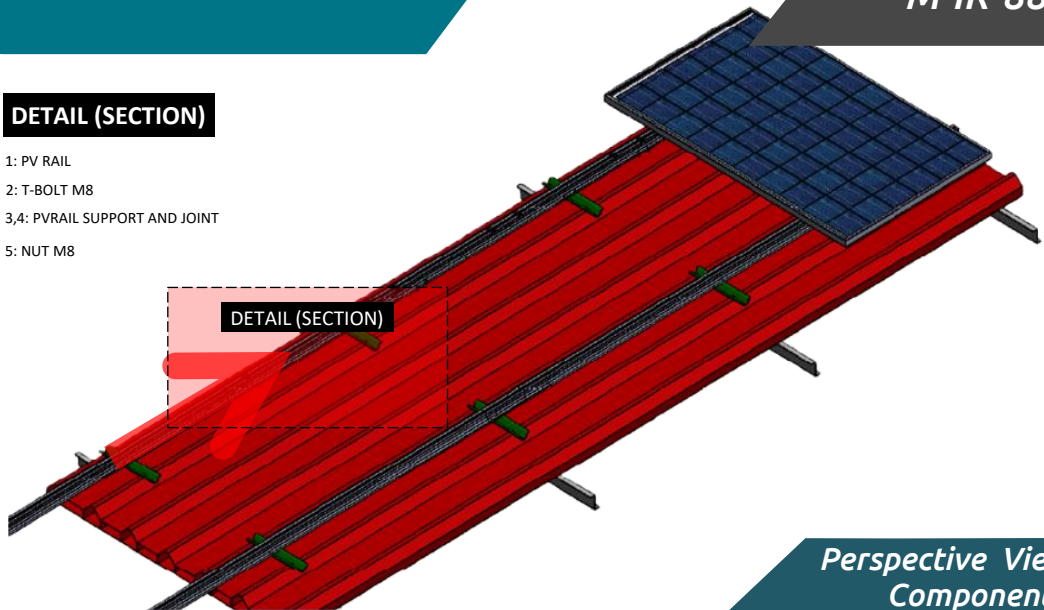
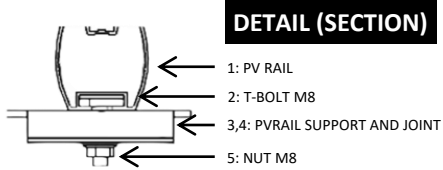
Corrugated/flat metal sheet/sandwich panel roof tops landscape

TECHNICAL FEATURES

Application	Industrial roof installations.
Materials	Aluminum.
Accessories	High quality INOX or Galvanized ones.
Orientation	Landscape.
Foundation	Parallel to the roof.
Anchoring	INOX T - bolts.
Standard	Eurocodes & National Annexes.
Mbmax for rail	0.70 kNm.
Wind load limit	33 m/s (Terrain Category III).
Snow load limit	1.7 kN/m ² (Zone C).

MOUNTING SYSTEM FOR INDUSTRIAL ROOFS

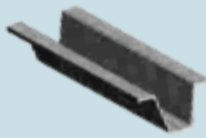
M-IR-880L



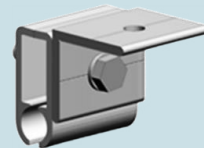
1: PV RAIL



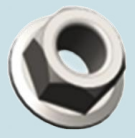
2: 'T' TYPE BOLT



3: RAIL BASE



4: CALZIP SHEET JOINT



5. WASHER NUT

