

MOUNTING SYSTEM FOR TILED ROOF INSTALLATIONS

M-TR-600L

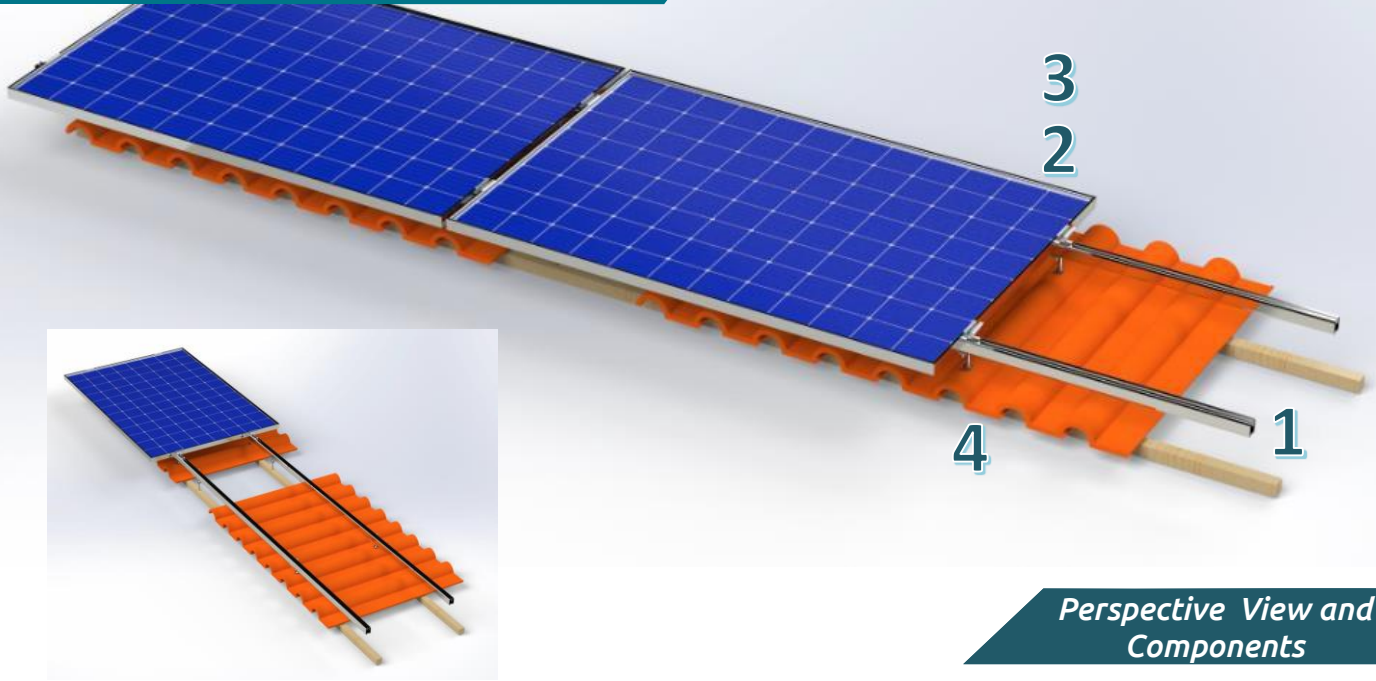
On tiled roofs,
with hanger bolts

TECHNICAL FEATURES

Application	Tiled roof installations.
Material	Aluminum.
Accessories	High quality INOX or aluminum ones.
Mounting Type	Corrosion resistant Hanger Bolts M10 or M12.
Orientation	Landscape.
Inclination System	On the roof.
Standard	Eurocodes & National Annexes.
Wind load limit	33 m/s (Terrain Category III).
Snow load limit	1.7 kN/m ² (Zone C).
Maximum bending moment	$Mb_{max} = 0,70kNm$

MOUNTING SYSTEM FOR TILED ROOF INSTALLATIONS

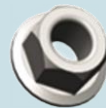
M-TR-600L



1: PV RAIL



2 'T' TYPE BOLT



3. WASHER NUT



4. HANGER BOLT

