

## STANDARD PROFILE CATALOGUE



## Aluminum profiles for custom applications



Metaloumin S.A. is a Greek aluminum extrusion industry established at 1969, producing its patented series of architectural profiles for doors & windows, special profiles to customers' requirements (green houses, deckings, architectural fittings, LED & lighting fixtures, balustrades, railings e.tc.) and since 2009 photovoltaic mounting systems and single axis Tracker for any type of installation.

Our internal Engineering & Static Studies' department has developed multiple geometries and designs, following contemporary market trends and client requirements.

In addition, experienced R & D department constantly works on new designs and applications to expand our product range and subsequent accessories, adapting to market requests and meeting clients' expectations.

Further, our Processing department (cutting, drilling and welding to measurements) provides a one-stop-shop experience.

Finally, our Logistic and After Sales service, ensure the future continuation of our co-operations.

### Metaloumin' s Certifications & Competitive advantages:

- EN ISO 9001:2015 Certification
- EN ISO 14001:2015 Certification
- QualiCoat-Sea Side Class Certification
- QualAnod Certification (process not in-house)
- Vertical in-house production beginning from aluminum raw material and resulting in complete systems
- Large variety of designs covering custom and contemporary markets



License No.:  
128



EN ISO 9001:2015

Αριθ. Εγγραφής Πιστοποιητικού:  
0405008



EN ISO 14001:2015

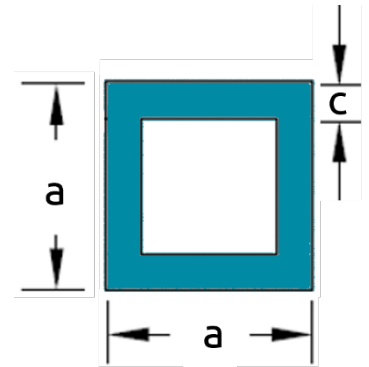
Αριθ. Εγγραφής Πιστοποιητικού:  
010140155

## Conditions - Services

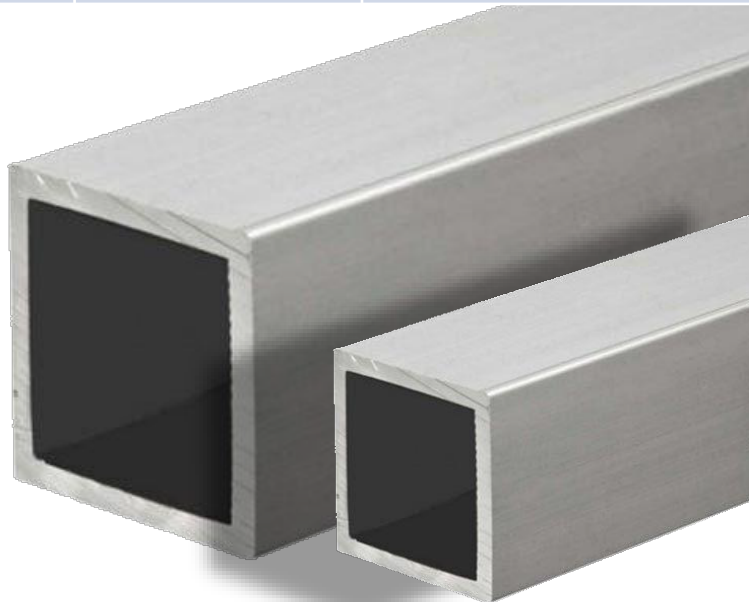
- Weight:** Theoretical weight listed, is nominal. Final weight depends - among others - on the process it will undergo (painting, anodizing, etc.)
- Delivery Terms:** At least 14 days, depending on availability and processing required.
- Machining:** High-class customized machining is available
- Powder Coating:** Available as per customer request. Certified by Qualicoat - Seaside standards
- Anodizing:** Available as per customer request. Certified by Qualanod standards
- Minimum Order:** 500kg min for profiles not in stock
- Tolerances:** As per table below

EN Standard	Description
EN 755-1	Technical conditions for inspection delivery
EN 755-3	Round bars, tolerances on dimension & form
EN 755-4	Square bars, tolerances on dimension & form
EN 755-5	Rectangular bars, tolerances on dimension & form
EN 755-6	Hexagonal bars, tolerances on dimension & form
EN 755-7	Seamless tubes, tolerances on dimension & form
EN 755-9	Profiles, tolerances on dimension & form

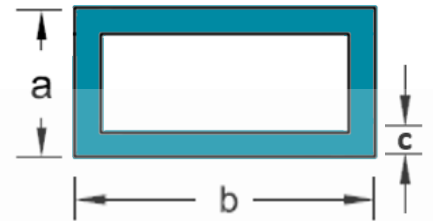




a (mm)	c (mm)	Theoretical * Weight (gr/m)
15	1,5	218
20	1,2	244
20	1,5	300
25	1,5	381
30	1,5	462
40	1,3	543
50	1,3	634



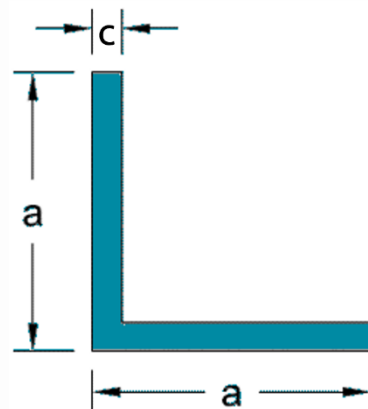
## Square Tubes



a (mm)	b (mm)	c (mm)	Theoretical* Weight (gr/m)
10	20	1,5	220
15	30	1,2	277
15	30	1,5	346
20	30	1,2	308
20	30	1,5	381
20	40	1,2	374
20	50	1,2	438
20	50	1,5	543
20	60	1,3	545
20	80	1,2	633
20	100	1,4	886
40	80	1,2	762

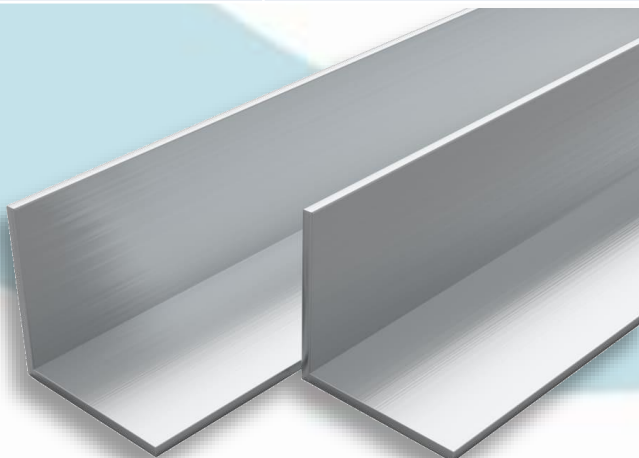
## Rectangular Tubes

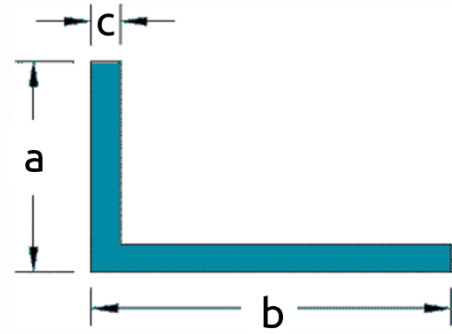




a (mm)	c (mm)	Theoretical * Weight (gr/m)
20	1,2	126
25	1,2	159
30	1,2	191
30	2,8	462
40	1,2	256
40	2,8	584
40	4,0	821
50	1,2	322

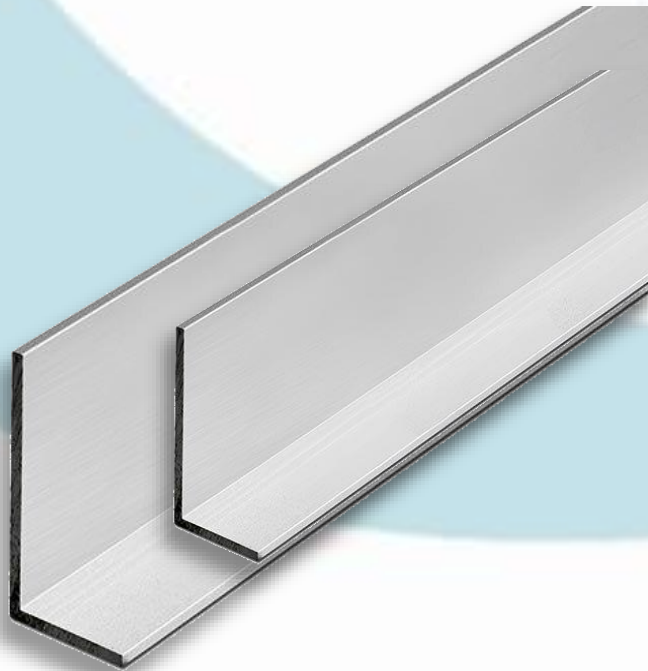
## L Profiles Symmetrical

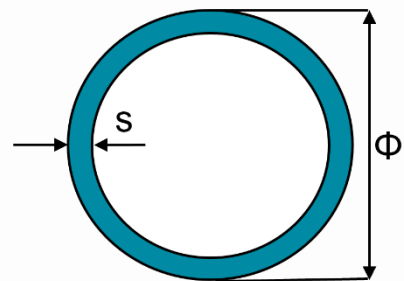




a (mm)	b (mm)	c (mm)	Theoretical* Weight (gr/m)
20	30	1,2	158
20	40	1,2	190
20	80	1,2	320
20	100	1,2	385
25	50	1,3	259
25	60	1,3	294

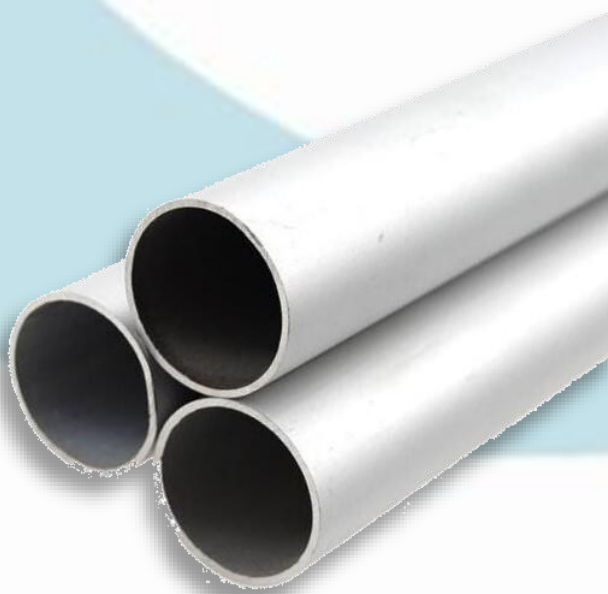
## L Profiles asymmetrical



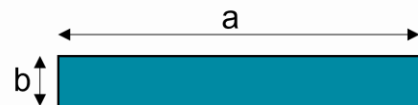


$\Phi$ (mm)	s (mm)	Theoretical * Weight (gr/m)
25	1,5	282
32	2	500
42	2,0	670
50	2,3	930
60	1,2	600
70	1,2	702
95	2,5	1961

## Round Tubes

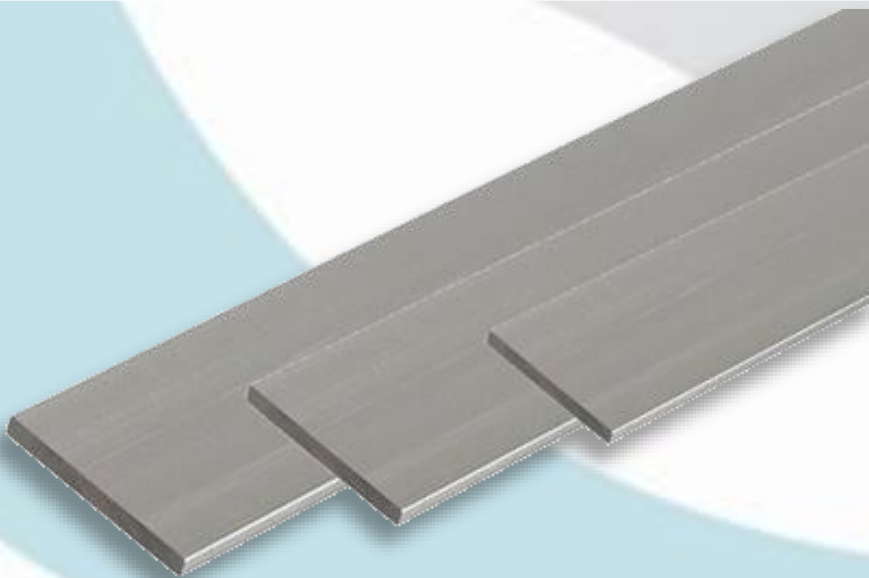


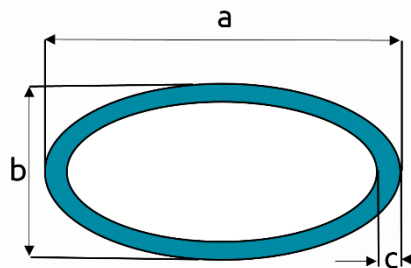




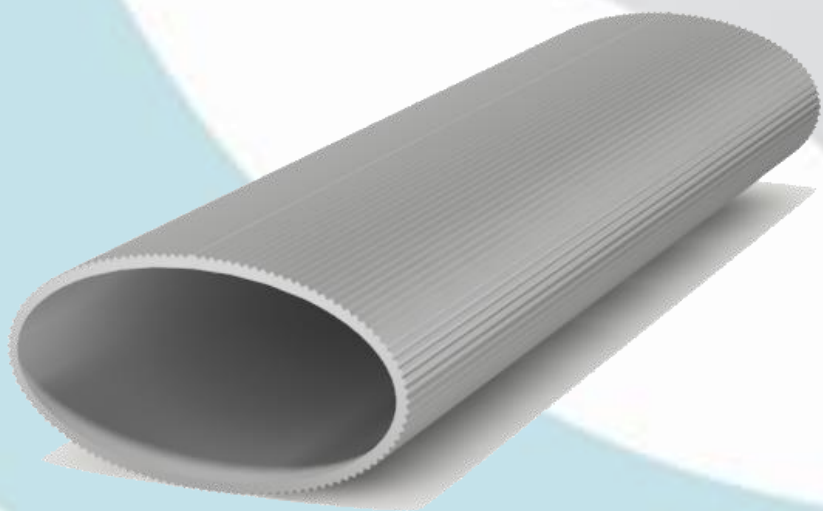
a (mm)	b (mm)	Theoretical * Weight (gr/m)
40	3,0	324
54	6,0	875
80	6,0	1.296

## Flat Bars

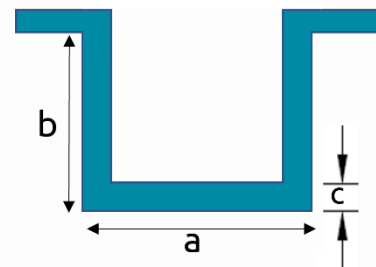




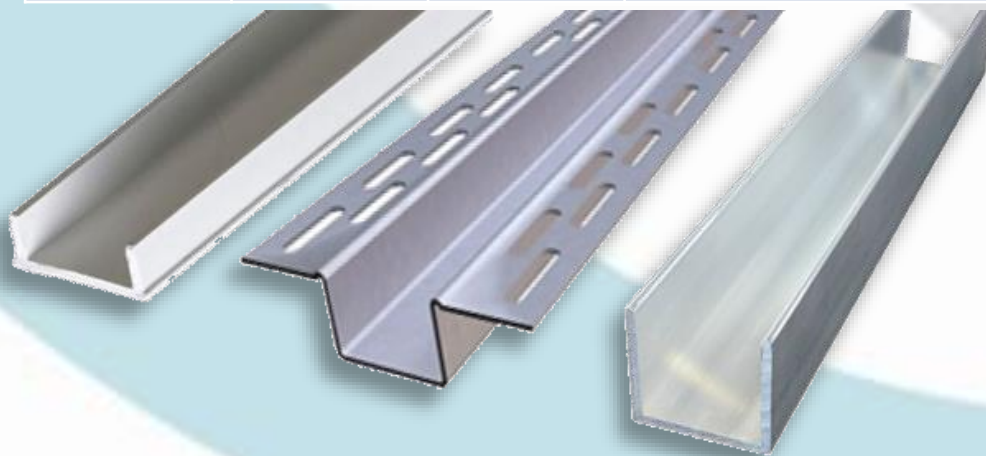
a (mm)	b (mm)	c (mm)	Theoretical* Weight (gr/m)
40	8	1,05	226
42	22	1,5	422
50	10	1,1	322




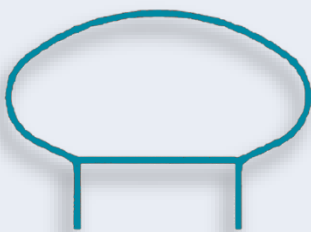
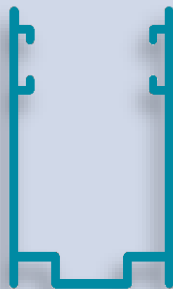

## Oval Tubes



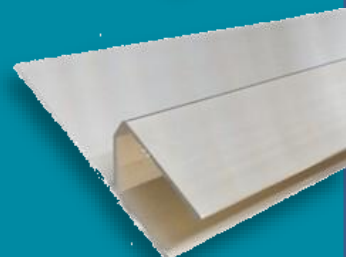
a (mm)	b (mm)	c (mm)	Theoretical* Weight (gr/m)
23	15	0,8	111
34,8	15	0,8	137
36	10	0,9	132
77	22	1,6	509
120	45	1,5	841



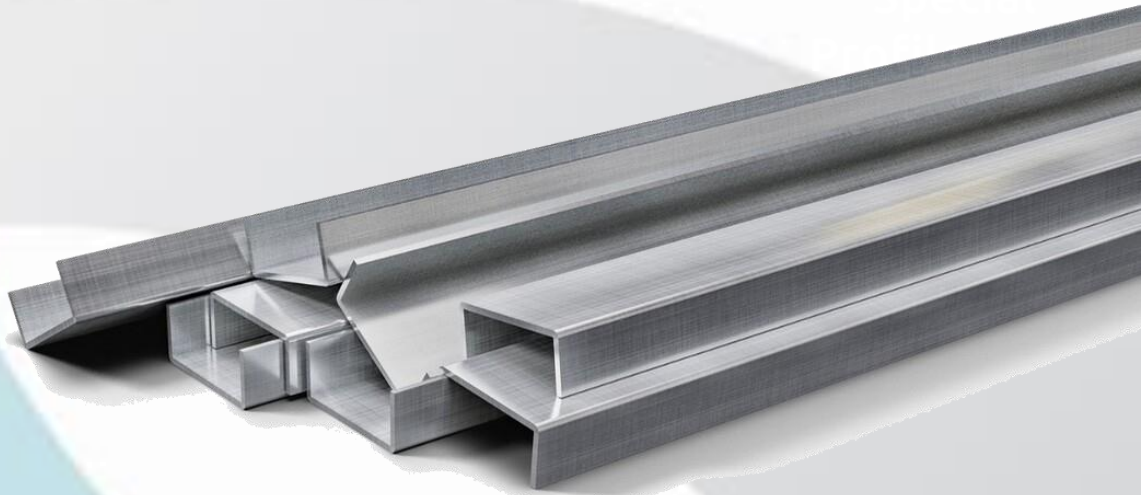
## Reveal Beads

Code Nr	View	Theoretical* Weight (gr/m)
AT 166		336
AT 1091		700
AT 1970		291,5
AT 23057		900

## Special Profiles (AT)



Special



**METALOU MIN**  
ALUMINIUM SYSTEMS SINCE 1969

20 AG. FANOUIROU STR., KTIPTO AHARNAI, GR 136 78, ATHENS, GREECE  
TEL: +30 210 2463630, FAX: +30 210 2464471, Web: [www.metaloumin.gr](http://www.metaloumin.gr), Email: [export@metaloumin.gr](mailto:export@metaloumin.gr)