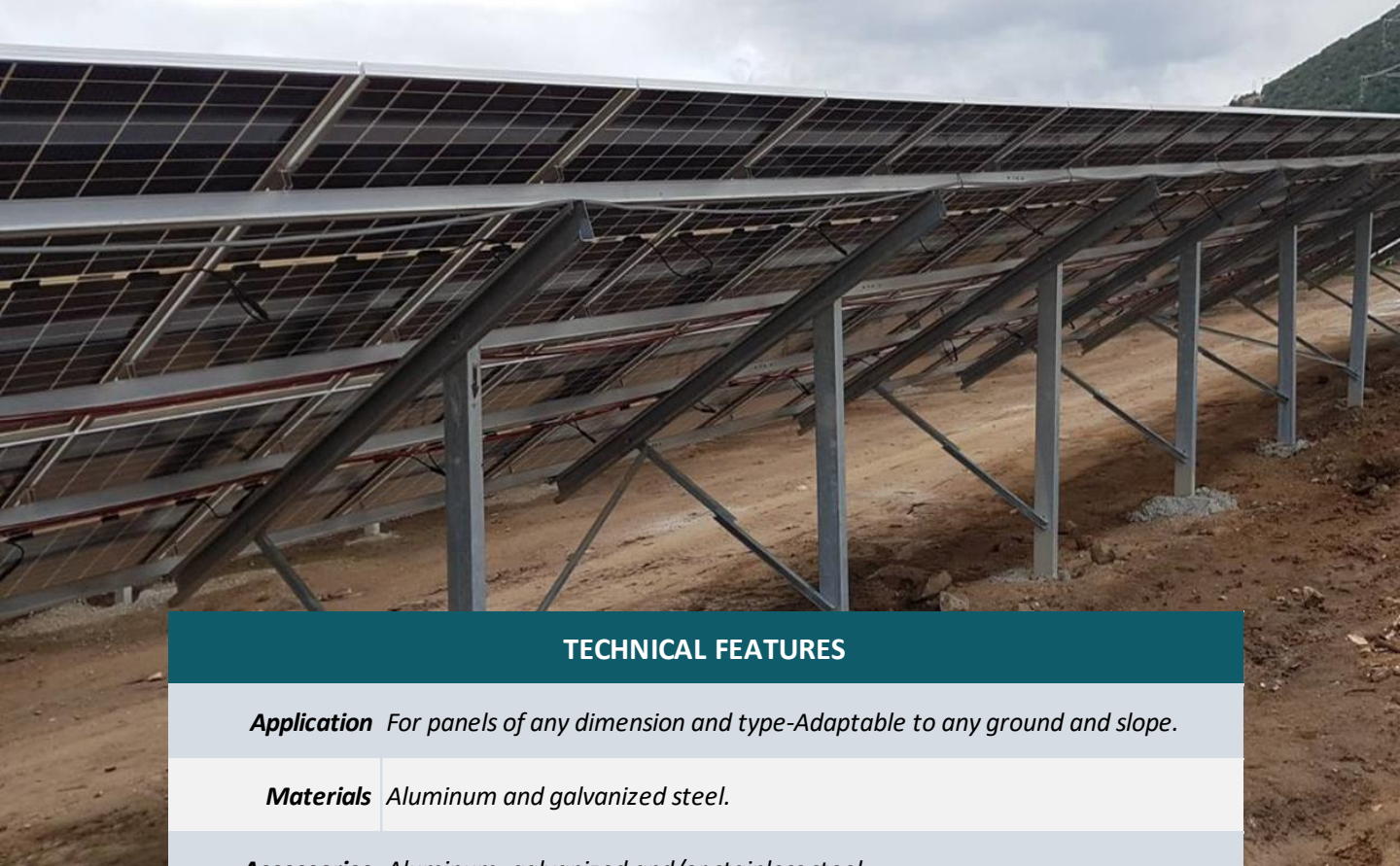


## SINGLE PILE MOUNTING SYSTEM FOR FIELD APPLICATIONS

**M-FS-104L**

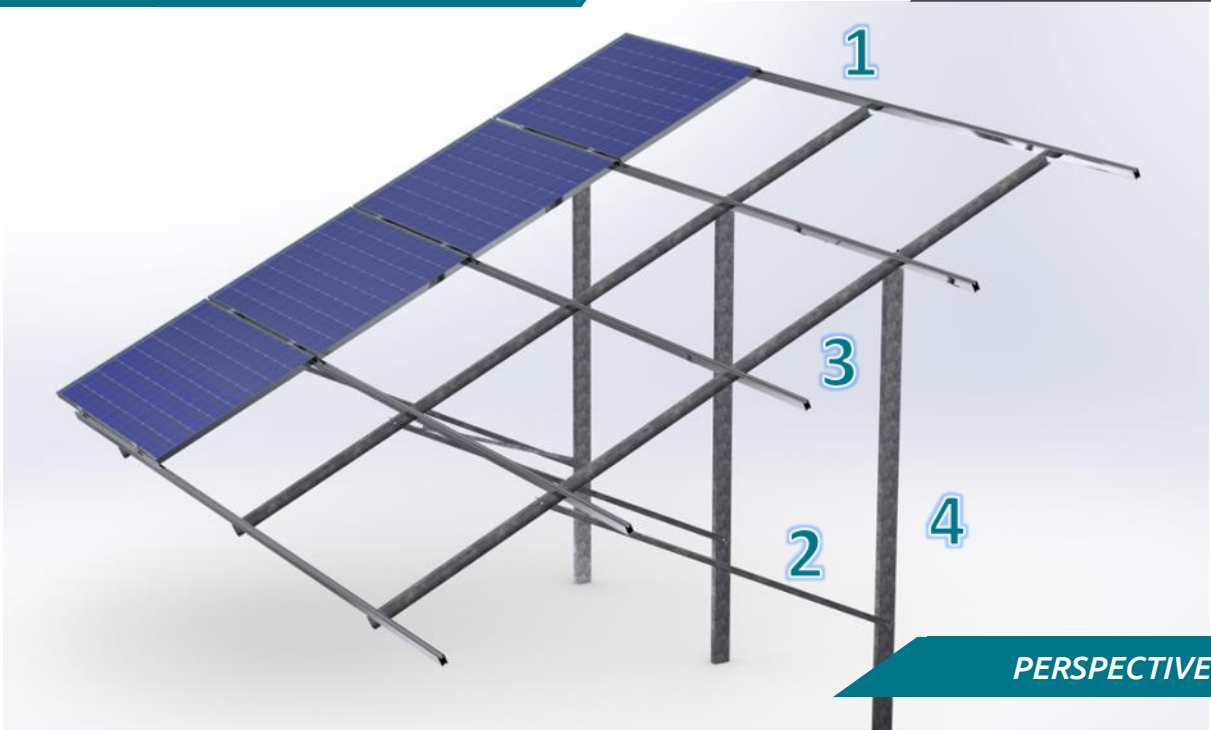


### TECHNICAL FEATURES



<b>Application</b>	<i>For panels of any dimension and type-Adaptable to any ground and slope.</i>
<b>Materials</b>	<i>Aluminum and galvanized steel.</i>
<b>Accessories</b>	<i>Aluminum, galvanized and/or stainless steel.</i>
<b>Inclination</b>	<i>20°- 25°- 30°, upon request.</i>
<b>Orientation</b>	<i>Landscape.</i>
<b>Dimensions (limit)</b>	<i>Unlimited extension of table length / Usually up to 40m in length.</i>
<b>PV Modules</b>	<i>Up to 2,5m in length/Special accessories for bifacial panels/Ability for further PV equipment on main structure.</i>
<b>Foundation</b>	<i>Pile ramming/Piles in holes filled with concrete/Piles in concrete blocks.</i>
<b>Wind load (limit)</b>	<i>33 m/s (Terrain Category I).</i>
<b>Snow load (limit)</b>	<i>1,7 kN/m<sup>2</sup> (Zone C).</i>
<b>Slopes (limit)</b>	<i>Normal design: ±15% E-W, -5% S-N. Special: ±35% E-W, 25% S-N. Slopes smooth, each structure w/steady slopes.</i>

**SINGLE PILE MOUNTING SYSTEM  
FOR FIELD APPLICATIONS**

**M-FS-104L**



**PERSPECTIVE**

			
<b>1. PV RAIL</b>	<b>2. U-BEAM</b>	<b>3. INCLINED BEAM</b>	<b>4. PILE</b>

