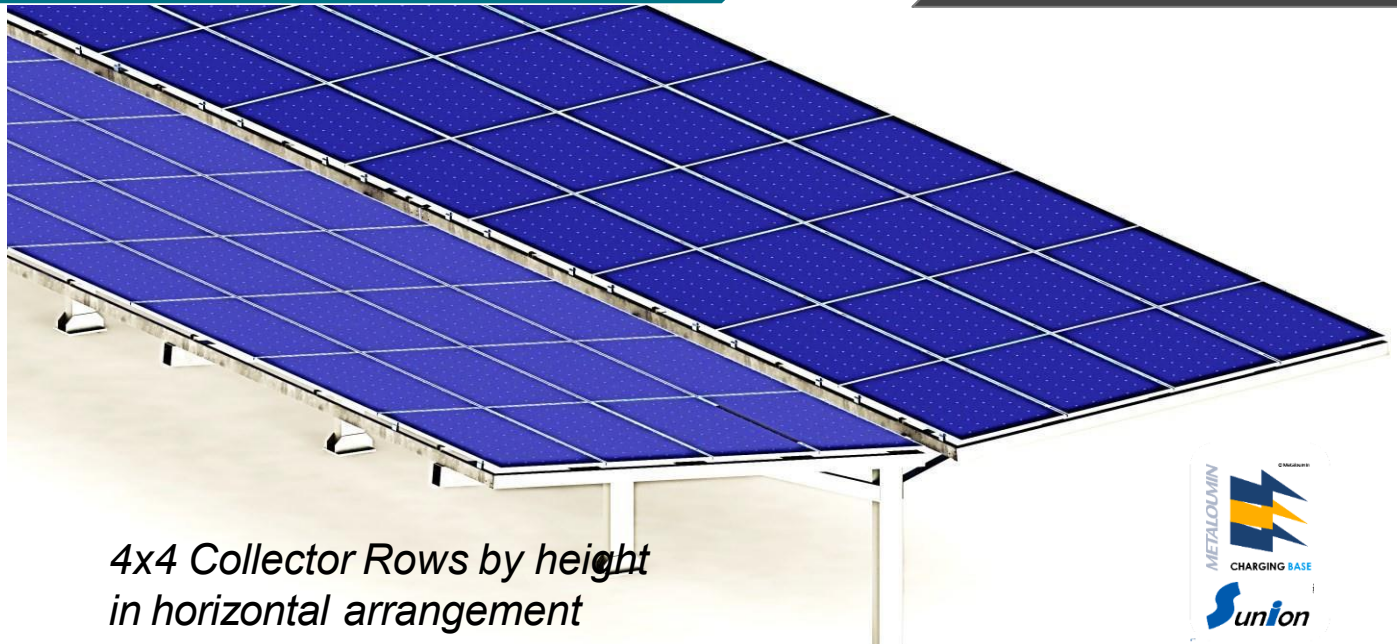


## DOUBLE-SLOPE SOLAR CAR PORT CHARGING STATION

# M-CPS-124L



*4x4 Collector Rows by height  
in horizontal arrangement*

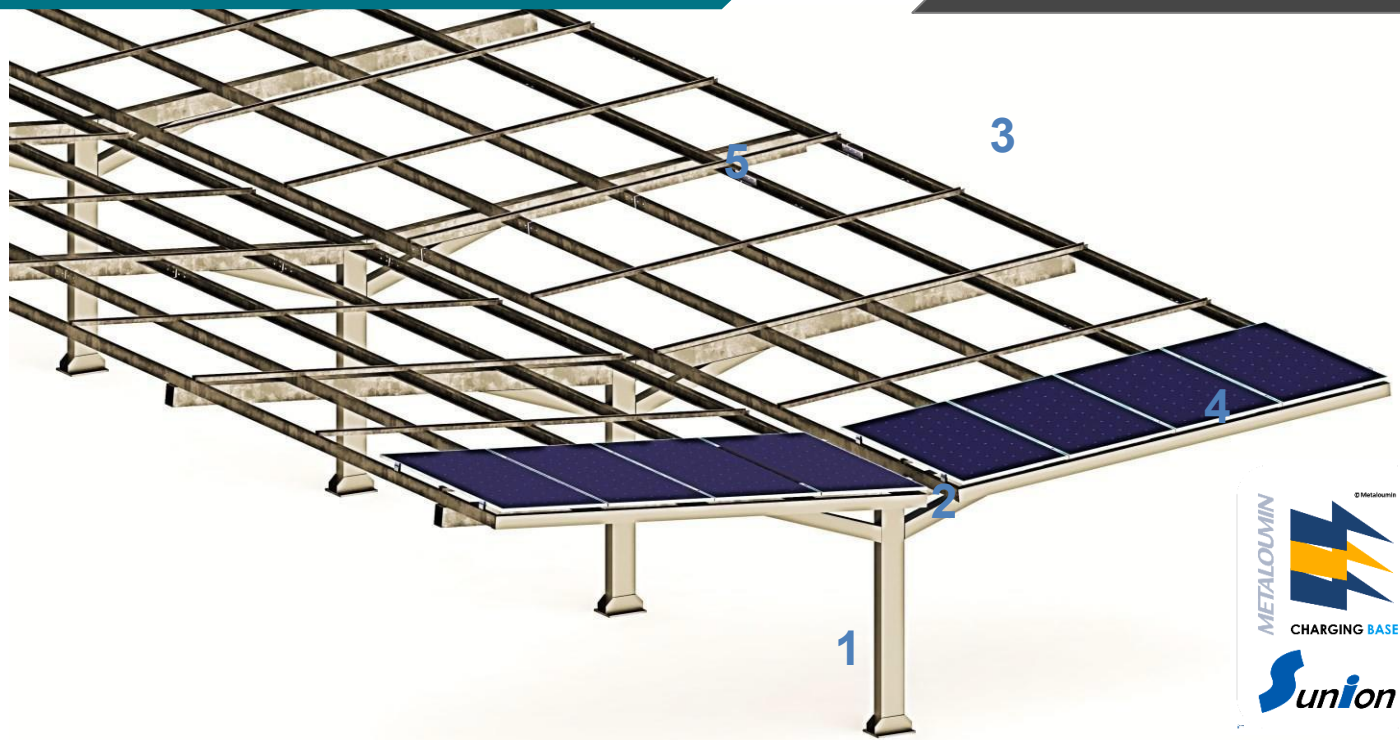


### TECHNICAL FEATURES

<b>Application</b>	Ground/ Flat Concrete.
<b>Materials</b>	Superstructure & Steel purlins with anti-corrosion protection. Columns made of hot-dip galvanized steel. Additional coloring option.
<b>Accessories</b>	Accessory materials: aluminum, and stainless and galvanized steel.
<b>Inclination</b>	5°.
<b>Orientation</b>	Horizontal.
<b>PV Collectors</b>	1600 - 2278 x 1134 x 30-40 mm.
<b>Dimensions</b>	Unlimited construction length extension, due to expansion joints.
<b>Foundation</b>	Threaded connection to concrete anchors.
<b>Wind Load Limit</b>	$V_{b0}=33$ m/s (Soil Category II).
<b>Snow load limit</b>	$S_{k0}=0,80$ kN/m <sup>2</sup> (Zone B) – Altitude: 300m.
<b>Other Features</b>	Cable routing inside the column. Non-visible screw connections.

**DOUBLE-SLOPE SOLAR CAR PORT  
CHARGING STATION**

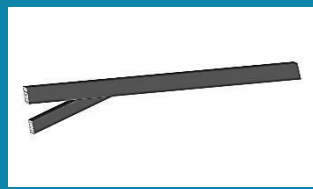
**M-CPS-124L**



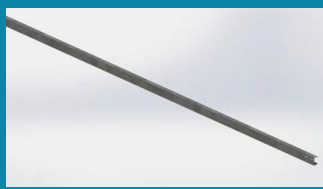
**CONSTRUCTION PARTS**



1. PILE



2. INCLINE



3. RAIL

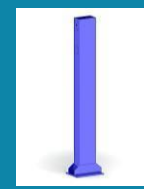


4. RAIL CAP

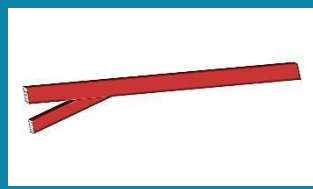


5. CABLE RACK

**OPTIONAL EQUIPMENT**



COLORED MATERIALS



COLLECTOR SEALING  
RUBBER



DRAINAGE SYSTEM

